

2023 - 2024

MATTE

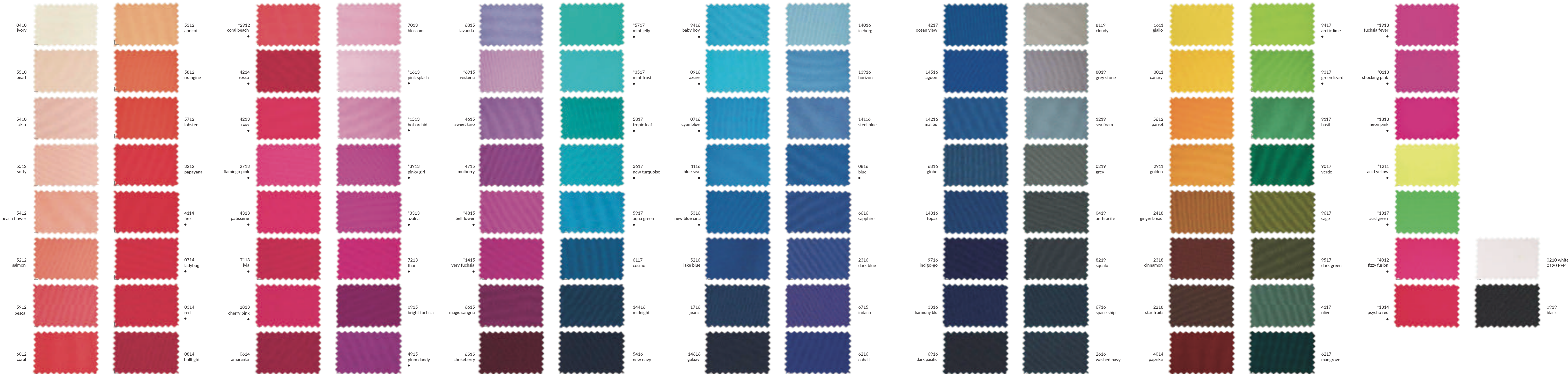
NYLON

COLLECTION

swim - active - fashion

KIRA
KARIMA
DOLPHIN
MAMI
JUSTIN
LEO
JAGUAR

PINE CREST FABRIC | MATTE NYLON & RECYCLED MATTE NYLON 2023-24



● Color dyed with a particular sensitive dyestuff that might create a "blue stains" effect in conditions of high humidity and temperature. This effect can be eliminated: machine wash the garment with soap at 30°C, delicate tumbler dry or hang to dry

* Fluorescent Colors

KIRA

APPLICATIONS

> Swimwear > Beachwear

This iconic matte charmeuse is PCF's signature fabric. High-performance and versatile, Kira is your best choice for high-quality tricot fabric.



0919 nero



0614 amaranta



0210 white - 0120 white PFP



5316 new blu cina

Composition			
Nylon	Elastane		
80%	20%		
Weight (±5%)	Width (+3%/-2%)		
195 g/m ²	293 g/m lin.		
150 cm			
Courses	Wales	Tolerance for composition (standard ASTM)	
46/cm	26/cm	±3%	
Dimensional Change of fabric after HL AATCC 135-2015 (1 wash, normal cycle at 41 degree Celsius line dry)	Max	Max	
	-5%	-5%	
Resistance to pilling ASTM D 3512-Random tumble at 30 minutes photographic rating STD	Width	Length	
	4 to 4.5		
Ultraviolet Protection Factor (U.P.F.) AATCC 183-2010	50+		
	110%		
Stretch to dynamometer (±15%)ASTM D 4964 - LOAD 20 LBS	Width	Length	
	215%		
Modulus % elongation (30% - 50% - 70%)	30%	50%	70%
	0.3-1.0	1.0-2.0	2.2-4.0
	0.0-0.2	0.3-1.0	1.0-1.6
Care labelling codes	Width Lbs	Length Lbs	

AATCC STANDARDS

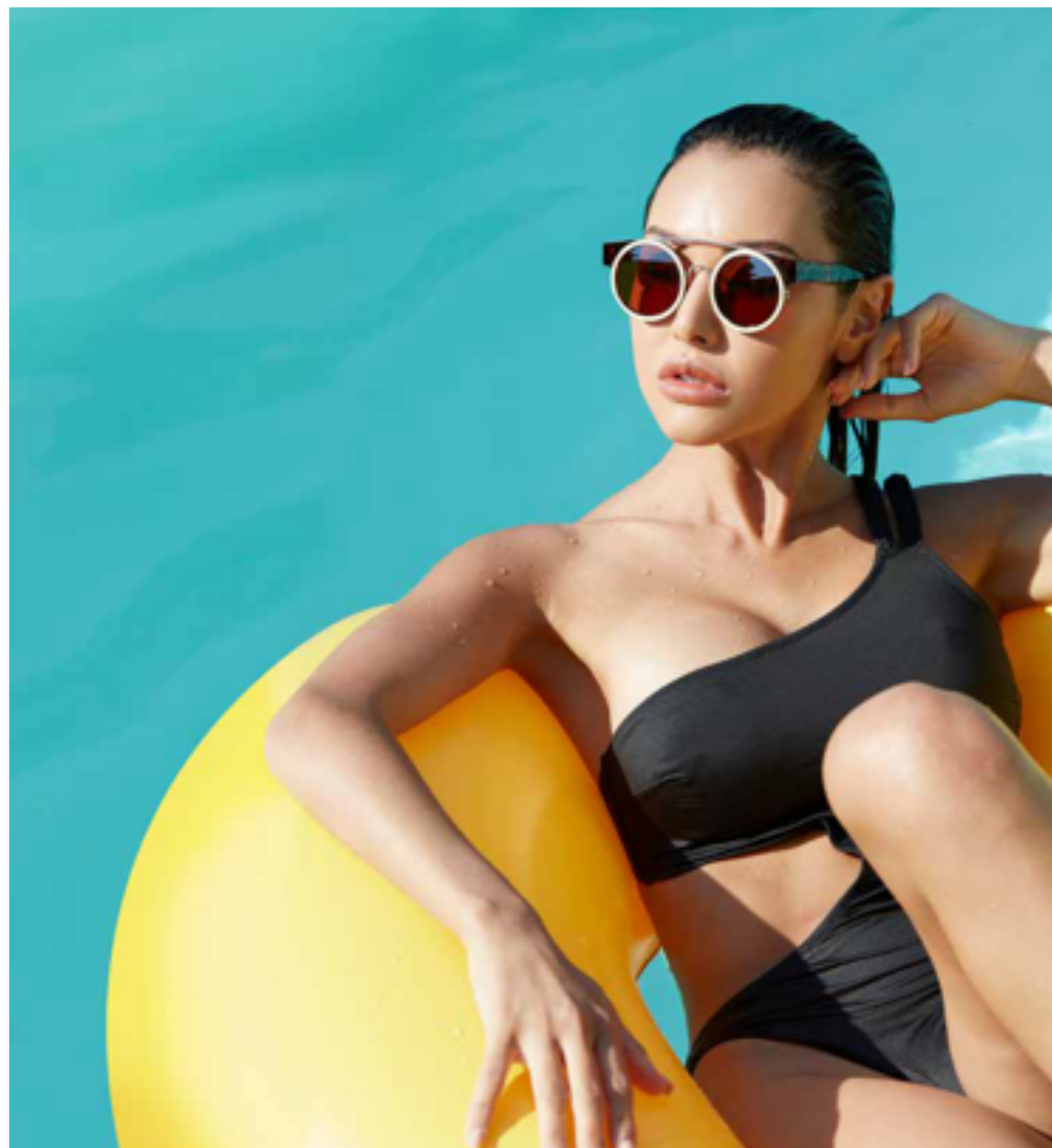
COLOR	CHLORINATED WATER AATCC 162		LIGHT AATCC 16-20 AFU		WATER 38°C AATCC 107					SEA WATER 38°C AATCC 106					PERSPIRATION AATCC 15					CROCKING AATCC 8		WASHING 49°C AATCC 61-2A										
	C.C.	C.C.	C.C.	AC	CO	PA	PL	PC	WO	C.C.	AC	CO	PA	PL	PC	WO	C.C.	AC	CO	PA	PL	PC	WO	S.CO DRY	S.CO WET	C.C.	AC	CO	PA	PL	PC	WO
	0210	3	3	4.5	5	5	5	5	5	5	4.5	5	5	5	5	5	5	4.5	5	5	5	5	5	5	5	5	4.5	5	5	5	5	5
0120	3	3	4.5	5	5	5	5	5	5	4.5	5	5	5	5	5	5	4.5	5	5	5	5	5	5	5	5	4.5	5	5	5	5	5	5
0614	4.5	4.5	4.5	4.5	4.5	4.5	4.5	4.5	4.5	4.5	4.5	4.5	4.5	4.5	4.5	4.5	4.5	4.5	4.5	4.5	4.5	4.5	4.5	4.5	3.5	4.5	4.5	4.5	3.5	4.5	4.5	4.5
5316	3.5	3.5	4.5	4.5	4.5	3.5	4.5	4.5	4	4.5	4.5	4.5	3.5	4.5	4.5	3.5	4.5	4.5	4.5	4.5	4.5	4.5	4.5	4.5	3.5	4	4.5	4	4	4.5	4.5	4
0919	4.5	4.5	4.5	4.5	4	4	4.5	4.5	4	4.5	4.5	4	4	4.5	4.5	4	4.5	4.5	4.5	4.5	4.5	4.5	4.5	4.5	3.5	4.5	4.5	4	4	4.5	4.5	4

ISO STANDARDS

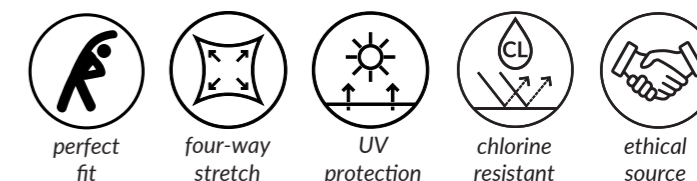
COLOR	CHLORINATED WATER ISO 105-E03	LIGHT ISO 105-B02	WATER ISO 105-E01			SEA WATER ISO 105-E02			ALKALINE PERSPIRATION PH 8.0 ISO 105-E04			ACID PERSPIRATION PH 5.5 ISO 105-E04			CROCKING ISO 105-X12		WASHING 40°C ISO 105-C06 A2S		
	C.C.	C.C.	C.C.	CO	PA	C.C.	CO	PA	C.C.	CO	PA	C.C.	CO	PA	S.CO DRY	S.CO WET	C.C.	CO	PA
	0210	2-3	3	4-5	5	5	4-5	5	5	4-5	5	5	4-5	5	5	5	5	4-5	5
0120	2-3	3	4-5	5	5	4-5	5	5	4-5	5	5	4-5	5	5	5	5	4-5	5	5
0614	3-4	4-5	4-5	4-5	4-5	4-5	4-5	4-5	4-5	4-5	4-5	4-5	4-5	4-5	4-5	3-4	4-5	4-5	4
5316	2-3	3-4	4-5	4-5	4	4-5	4-5	4	4-5	4-5	4	4-5	4-5	4	4-5	3-4	4-5	4	4
0919	4-5	4-5	4-5	4-5	4	4-5	4-5	4	4-5	4-5	4	4-5	4-5	4	4-5	3-4	4-5	4-5	4

Available colors: The 4 colors presented on this page are always available for sampling. If you would like to choose a color from the main **Matte Nylon** color card, you can enjoy a MCQ of only 77yd for bulk orders. However, the resulting color shade and the color fastness performance may be slightly different. We will submit to your attention a lab dip swatch for approval before going to bulk production.

Special notes/warnings: It is advisable to test in lab color combinations, molding, bonding and applications on fabric in order to avoid problems during garment production. Please carefully check physical data and color fastness forecasts.



KIRA





KARIMA

APPLICATIONS

> Swimwear > Beachwear

This lightweight charmeuse, designed to sculpt the silhouette without constraints, can naturally suit comfortable beachwear and swimwear.



0919 nero



0614 amaranta



0210 white - 0120 white PFP



5316 new blu cina

Composition

Nylon		Elastane	
80%		20%	
Weight (±5%)		Width (+3%/-2%)	
175 g/m ²	263g/m lin.	150cm	
Courses	Wales	Tolerance for composition (standard ASTM)	
41/cm	25/cm	3%	
Dimensional Change of fabric after HL		Max	Max
AATCC 135-2015 (1 wash, normal cycle at 41 degree Celsius line dry)		-5%	-5%
		Width	Length
Resistance to pilling		4 to 4.5	
ASTM D 3512-Random tumble at 30 minutes photographic rating STD			
Ultraviolet Protection Factor (U.P.F.) AATCC 183-2010		50+	
Stretch to dynamometer (±15%ASTM D 4964 - LOAD 20 LBS)		115%	190%
		Width	Length
		(min 98% - max 132% / min 162% - max 219%)	
Modulus % elongation (30% - 50% - 70%)		30%	50%
		02-08	08-1.6
		16-32	00-05
		06-1.2	12-1.8
		Width Lbs	Length Lbs
Care labelling codes			

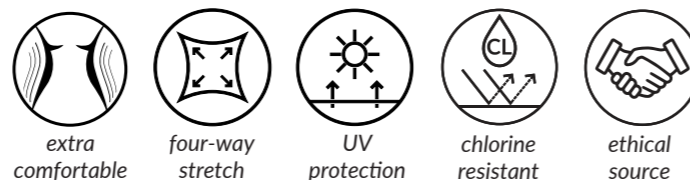
AATCC STANDARDS

COLOR	CHLORINATED WATER AATCC 162		LIGHT AATCC 16-20 AFU		WATER 38°C AATCC 107								SEA WATER 38°C AATCC 106								PERSPIRATION AATCC 15								CROCKING AATCC 8		WASHING 49°C AATCC 61-2A							
	C.C.	C.C.	C.C.	AC	CO	PA	PL	PC	WO	C.C.	AC	CO	PA	PL	PC	WO	C.C.	AC	CO	PA	PL	PC	WO	S.CO DRY	S.CO WET	C.C.	AC	CO	PA	PL	PC	WO						
	0210	3	3	4.5	5	5	5	5	5	5	4.5	5	5	5	5	5	5	4.5	5	5	5	5	5	5	5	5	4.5	5	5	5	5	5	5					
0120	3	3	4.5	5	5	5	5	5	5	4.5	5	5	5	5	5	5	4.5	5	5	5	5	5	5	5	5	4.5	5	5	5	5	5	5						
0614	4.5	4.5	4.5	4.5	4.5	4.5	4.5	4.5	4.5	4.5	4.5	4.5	4.5	4.5	4.5	4.5	4.5	4.5	4.5	4.5	4.5	4.5	4.5	4	3	4	4.5	4.5	3.5	4.5	4.5	4.5						
5316	3.5	3.5	4.5	4.5	4.5	3.5	4.5	4.5	4	4.5	4.5	4.5	3.5	4.5	4.5	3.5	4.5	4.5	4.5	4.5	4.5	4.5	4.5	4.5	3.5	4	4.5	4	4	4.5	4.5	4						
0919	4.5	4.5	4.5	4.5	4	4	4.5	4.5	4	4.5	4.5	4	4	4.5	4.5	4	4.5	4.5	4.5	4.5	4.5	4.5	4.5	4.5	3.5	4.5	4.5	4	4	4.5	4.5	4						

ISO STANDARDS

COLOR	CHLORINATED WATER ISO 105-E03	LIGHT ISO 105-B02	WATER ISO 105-E01				SEA WATER ISO 105-E02			ALKALINE PERSPIRATION PH 8.0 ISO 105-E04			ACID PERSPIRATION PH 5.5 ISO 105-E04			CROCKING ISO 105-X12		WASHING 40°C ISO 105-C06 A2S													
	C.C.	C.C.	C.C.	CO	PA	C.C.	CO	PA	C.C.	CO	PA	C.C.	CO	PA	S.CO DRY	S.CO WET	C.C.	CO	PA												
	0210	2-3	3	4-5	5	5	4-5	5	5	4-5	5	5	4-5	5	5	5	5	5	5	5	5	5	5	5	5	5	5	5	5	5	5
0120	2-3	3	4-5	5	5	4-5	5	5	4-5	5	5	4-5	5	5	5	5	5	5	5	5	5	5	5	5	5	5	5	5	5	5	5
0614	3-4	4-5	4-5	4-5	4-5	4-5	4-5	4-5	4-5	4-5	4-5	4-5	4-5	4-5	4-5	4-5	4-5	4-5	4-5	4-5	4-5	4-5	4-5	4-5	3	4-5	4-5	4-5	4	4	4
5316	2-3	3-4	4-5	4-5	4	4-5	4-5	4	4-5	4-5	4	4-5	4-5	4	4-5	4-5	4	4-5	4-5	4	4-5	4-5	4	4-5	3-4	4-5	4-5	4	4	4	4
0919	4-5	4-5	4-5	4-5	4	4-5	4-5	4	4-5	4-5	4	4-5	4-5	4	4-5	4-5	4	4-5	4-5	4	4-5	4-5	4	4-5	3-4	4-5	4-5	4-5	4	4	4

KARIMA



Available colors: The 4 colors presented on this page are always available for sampling. If you would like to choose a color from the main **Matte Nylon** color card, you can enjoy a MCQ of only 77yd for bulk orders. However, the resulting color shade and the color fastness performance may be slightly different. We will submit to your attention a lab dip swatch for approval before going to bulk production.

Special notes/warnings: It is advisable to test in lab color combinations, molding, bonding and applications on fabric in order to avoid problems during garment production. Please carefully check physical data and color fastness forecasts.

DOLPHIN

APPLICATIONS

> Swimwear > Beachwear > Activewear

Dolphin is a naturally soft charmeuse resembling circular knitted fabrics. Compact, matte, and lightweight, this fabric is ideal for trendy and comfortable beachwear and swimwear collections.



7119 black



0614 amaranta



4510 white - 4410 white PFP



5316 new blu cina

Composition

Nylon		Elastane			
80%		20%			
Weight (±5%)		Width (+3%/-2%)			
180 g/m ²	270 g/m lin.	150 cm			
Courses	Wales	Tolerance for composition (standard ASTM)			
46/cm	27/cm	±3%			
Dimensional Change of fabric after HL AATCC 135-2015 (1 wash, normal cycle at 41 degree Celsius line dry)		Max	Max		
		-5%	-5%		
Resistance to pilling ASTM D 3512-Random tumble at 30 minutes photographic rating STD		Width	Length		
		4 to 4.5			
Ultraviolet Protection Factor (U.P.F.) AATCC 183-2010		50+			
Stretch to dynamometer (±15%) ASTM D 4964 - LOAD 20 LBS		100%	165%		
		Width	Length		
Modulus % elongation (30% - 50% - 70%)		(min 85% - max 115%) (min 140% - max 190%)			
		30%	50%	70%	30%
Care labelling codes		00-08 08-16 20-42 01-08 05-15 12-22			
		Width Lbs		Length Lbs	

AATCC STANDARDS

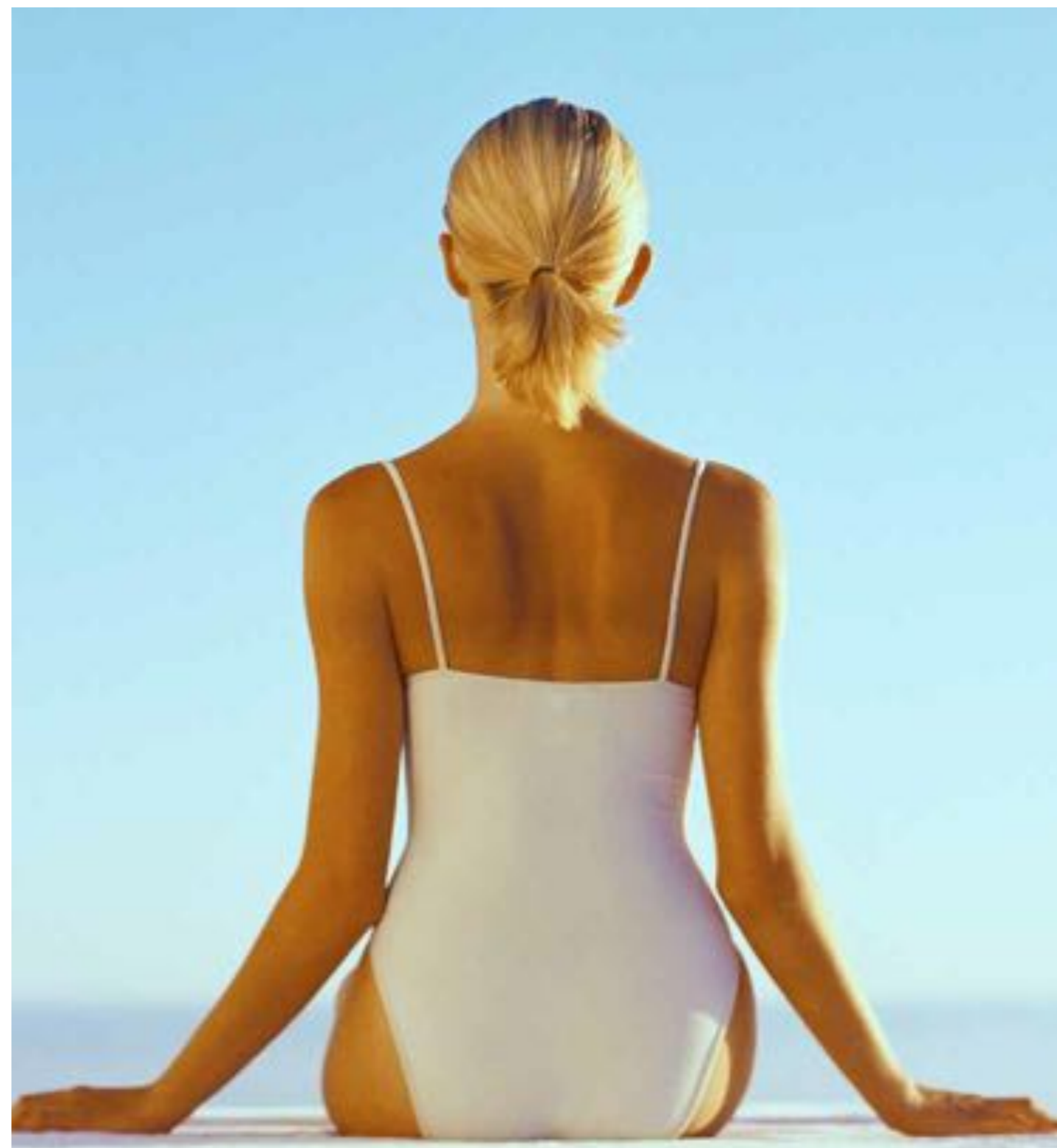
COLOR	CHLORINATED WATER AATCC 162		LIGHT AATCC 16-20 AFU		WATER 38°C AATCC 107					SEA WATER 38°C AATCC 106					PERSPIRATION AATCC 15					CROCKING AATCC 8		WASHING 49°C AATCC 61-2A											
	C.C.	C.C.	C.C.	AC	CO	PA	PL	PC	WO	C.C.	AC	CO	PA	PL	PC	WO	C.C.	AC	CO	PA	PL	PC	WO	S.CO DRY	S.CO WET	C.C.	AC	CO	PA	PL	PC	WO	
	4510	3	3	4.5	5	5	5	5	5	5	4.5	5	5	5	5	5	5	4.5	5	5	5	5	5	5	5	5	4.5	5	5	5	5	5	5
4410	3	3	4.5	5	5	5	5	5	5	4.5	5	5	5	5	5	5	4.5	5	5	5	5	5	5	5	5	4.5	5	5	5	5	5	5	
0614	4	4.5	4.5	4.5	4.5	4	4.5	4.5	4	4.5	4.5	4	4	4.5	4.5	4	4.5	4.5	4.5	4.5	4.5	4.5	4.5	4.5	4.5	3	4.5	4.5	4.5	3.5	4.5	4.5	4.5
5316	3	3.5	4.5	4	3.5	3	3.5	3.5	3	4.5	4.5	3.5	3	3.5	4	3	4.5	4.5	4.5	4	4.5	4.5	4	4.5	3	4	4.5	3.5	3	4	4.5	3.5	
7119	4.5	4.5	4.5	4	4	3.5	4	4.5	4	4.5	4	4	3.5	4	4.5	4	4.5	4.5	4.5	4	4.5	4.5	4.5	4.5	3	4.5	4	4	3.5	4	4.5	4	

ISO STANDARDS

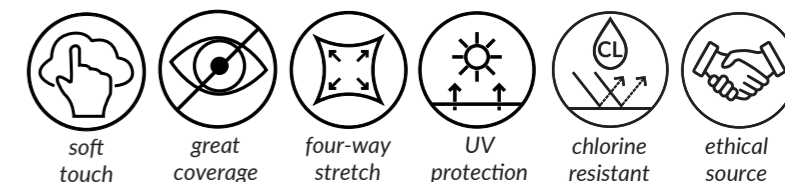
COLOR	CHLORINATED WATER ISO 105-E03	LIGHT ISO 105-B02	WATER ISO 105-E01				SEA WATER ISO 105-E02			ALKALINE PERSPIRATION PH 8.0 ISO 105-E04			ACID PERSPIRATION PH 5.5 ISO 105-E04			CROCKING ISO 105-X12		WASHING 40°C ISO 105-C06 A2S		
	C.C.	C.C.	C.C.	CO	PA	C.C.	CO	PA	C.C.	CO	PA	C.C.	CO	PA	S.CO DRY	S.CO WET	C.C.	CO	PA	
	4510	2-3	3	4-5	5	5	4-5	5	5	4-5	5	5	4-5	5	5	5	5	4-5	5	5
4410	2-3	3	4-5	5	5	4-5	5	5	4-5	5	5	4-5	5	5	5	5	4-5	5	5	
0614	3-4	4-5	4-5	4-5	4	4-5	4-5	4	4-5	4-5	4	4-5	4-5	4	4-5	3	4-5	4-5	4	
5316	2	3-4	4-5	4-5	3-4	4-5	4-5	3-4	4-5	4-5	3-4	4-5	4-5	3-4	4-5	3	4-5	3-4	3-4	
7119	4-5	4-5	4-5	4-5	4	4-5	4-5	4	4-5	4-5	4	4-5	4-5	4	4-5	3	4-5	4-5	3-4	

Available colors: The 4 colors presented on this page are always available for sampling. If you would like to choose a color from the main **Matte Nylon** color card, you can enjoy a MCQ of only 77yd for bulk orders. However, the resulting color shade and the color fastness performance may be slightly different. We will submit to your attention a lab dip swatch for approval before going to bulk production.

Special notes/warnings: It is advisable to test in lab color combinations, molding, bonding and applications on fabric in order to avoid problems during garment production. Please carefully check physical data and color fastness forecasts.



DOLPHIN





MAMI

APPLICATIONS

> Swimwear > Beachwear > Activewear

Mami is a shapewear fabric which can ensure the best fit when used both for swimwear and athleisure items. This fabric shapes the silhouette while ensuring the maximum comfort and control for the body.



2119 black



0614 amaranta



1110 white - 1310 white PFP



5316 new blu cina

Composition

Nylon	Elastane
77%	23%

Weight (±5%)

Width (+3%/-2%)

215g/m ²	323g/m lin.	150 cm
---------------------	-------------	--------

Courses	Wales	Tolerance for composition (standard ASTM)
---------	-------	---

49/cm	26/cm	±3%
-------	-------	-----

Dimensional Change of fabric after HL AATCC 135-2015 (1 wash, normal cycle at 41 degree Celsius line dry)	Max	Max
	-5%	-5%
	Width	Length

Resistance to pilling ASTM D 3512-Random tumble at 30 minutes photographic rating STD	4.5
--	-----

Ultraviolet Protection Factor (U.P.F.) AATCC 183-2010	50+
---	-----

Stretch to dynamometer (±15%) ASTM D 4964 - LOAD 20 LBS	100%	180%
	Width	Length

Modulus % elongation (30% - 50% - 70%)	30%	50%	70%	30%	50%	70%
	0.4-0.9	1.0-2.0	2.0-3.6	0.1-0.7	0.8-1.5	1.5-2.5

Care labelling codes	40	X	A	P	X
----------------------	----	---	---	---	---

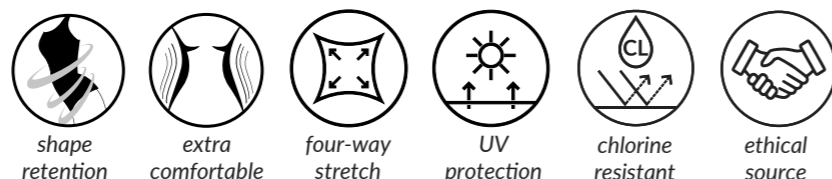
AATCC STANDARDS

COLOR	CHLORINATED WATER AATCC 162		LIGHT AATCC 16-20 AFU		WATER 38°C AATCC 107								SEA WATER 38°C AATCC 106								PERSPIRATION AATCC 15						CROCKING AATCC 8		WASHING 49°C AATCC 61-2A							
	C.C.	C.C.	C.C.	AC	CO	PA	PL	PC	WO	C.C.	AC	CO	PA	PL	PC	WO	C.C.	AC	CO	PA	PL	PC	WO	S.CO DRY	S.CO WET	C.C.	AC	CO	PA	PL	PC	WO				
	1110	3	3	4.5	5	5	5	5	5	5	4.5	5	5	5	5	5	5	4.5	5	5	5	5	5	5	5	5	5	4.5	5	5	5	5	5			
1310	3	3	4.5	5	5	5	5	5	5	4.5	5	5	5	5	5	5	4.5	5	5	5	5	5	5	5	5	4.5	5	5	5	5	5					
0614	4	4.5	4.5	4.5	4.5	4	4.5	4.5	4.5	4.5	4.5	4	4	4.5	4.5	4	4.5	4.5	4.5	4.5	4.5	4.5	4.5	4.5	4.5	3	4.5	4.5	3.5	4	4.5	4.5				
5316	3	3.5	4.5	4.5	4	3	4	4	3	4.5	4.5	4	3	4	4	3	4.5	4.5	4.5	4	4.5	4.5	4	4.5	3	4	4.5	3.5	3	4.5	4.5	3.5				
2119	4.5	4.5	4.5	4	4	3.5	4	4	4	4.5	4	4	3.5	4	4	4	4.5	4.5	4.5	4	4.5	4.5	4.5	4.5	3.5	4.5	4	4	3	4	4.5	4				

ISO STANDARDS

COLOR	CHLORINATED WATER ISO 105-E03		LIGHT ISO 105-B02		WATER ISO 105-E01			SEA WATER ISO 105-E02			ALKALINE PERSPIRATION PH 8.0 ISO 105-E04			ACID PERSPIRATION PH 5.5 ISO 105-E04			CROCKING ISO 105-X12		WASHING 40°C ISO 105-C06 A25			
	C.C.	50 mg/l	C.C.	C.C.	CO	PA	C.C.	CO	PA	C.C.	CO	PA	C.C.	CO	PA	S.CO DRY	S.CO WET	C.C.	CO	PA		
	1110	2-3	3	4-5	5	5	4-5	5	5	4-5	5	5	4-5	5	5	4-5	5	5	5	5	4-5	5
1310	2-3	3	4-5	5	5	4-5	5	5	4-5	5	5	4-5	5	5	4-5	5	5	5	5	4-5	5	5
0614	3-4	4-5	4-5	4-5	4	4-5	4-5	4	4-5	4-5	4	4-5	4-5	4	4-5	4-5	4	4-5	3	4-5	4-5	4
5316	2-3	3	4-5	4-5	4	4-5	4-5	4	4-5	4-5	4	4-5	4-5	4	4-5	4-5	4	4-5	3	4-5	3-4	3-4
2119	4-5	4-5	4-5	4-5	4	4-5	4-5	4	4-5	4-5	4	4-5	4-5	4	4-5	4-5	4	4-5	3-4	4-5	4-5	3-4

MAMI



Available colors: The 4 colors presented on this page are always available for sampling. If you would like to choose a color from the main **Matte Nylon** color card, you can enjoy a MCQ of only 77yd for bulk orders. However, the resulting color shade and the color fastness performance may be slightly different. We will submit to your attention a lab dip swatch for approval before going to bulk production.

Special notes/warnings: It is advisable to test in lab color combinations, molding, bonding and applications on fabric in order to avoid problems during garment production. Please carefully check physical data and color fastness forecasts.

JUSTIN

APPLICATIONS

> Swimwear > Beachwear > Underwear

Elegant and stylish, Justin fits the body like a second skin. Designed for easy-fit underwear items, it is very lightweight, breathable and comfortable to wear.



9019 black



0614 amaranta



1010 white - 1210 white PFP



5316 new blu cina

Composition					
Nylon	Elastane				
77%	23%				
Weight (±5%)	Width (+3%/-2%)				
155g/m ²	231g/m lin.				
147cm					
Courses	Wales				
46/cm	25/cm				
Tolerance for composition (standard ASTM)					
±3%					
Dimensional Change of fabric after HL AATCC 135-2015 (1 wash, normal cycle at 41 degree Celsius line dry)					
Max	Max				
-5%	-5%				
Width	Length				
Resistance to pilling ASTM D 3512-Random tumble at 30 minutes photographic rating STD					
4 to 4.5					
Ultraviolet Protection Factor (U.P.F.) AATCC 183-2010					
40/50+					
Stretch to dynamometer (±15%)ASTM D 4964 - LOAD 20 LBS					
210%	135%				
Width	Length				
(min 179% - max 242%) (min 115% - max 155%)					
30%	50%	70%	30%	50%	70%
Modulus % elongation (30% - 50% - 70%)					
0.0-0.2 0.2-0.7 0.7-1.2 0.2-0.8 0.8-1.4 1.4-2.4					
Width Lbs		Length Lbs			
Care labelling codes					

AATCC STANDARDS

COLOR	CHLORINATED WATER AATCC 162		LIGHT AATCC 16-20 AFU		WATER 38°C AATCC 107					SEA WATER 38°C AATCC 106					PERSPIRATION AATCC 15					CROCKING AATCC 8		WASHING 49°C AATCC 61-2A										
	C.C.	C.C.	C.C.	AC	CO	PA	PL	PC	WO	C.C.	AC	CO	PA	PL	PC	WO	C.C.	AC	CO	PA	PL	PC	WO	S.CO DRY	S.CO WET	C.C.	AC	CO	PA	PL	PC	WO
	1010	3	3	4.5	5	5	5	5	5	5	4.5	5	5	5	5	5	5	4.5	5	5	5	5	5	5	5	5	4.5	5	5	5	5	5
1210	3	3	4.5	5	5	5	5	5	5	4.5	5	5	5	5	5	5	4.5	5	5	5	5	5	5	5	5	4.5	5	5	5	5	5	5
0614	4	4.5	4.5	4.5	4.5	4	4.5	4.5	4.5	4.5	4.5	4	4	4.5	4.5	4	4.5	4.5	4.5	4.5	4.5	4.5	4.5	4.5	3	4.5	4.5	4.5	3.5	4	4.5	4.5
5316	2.5	3.5	4.5	3.5	3	2.5	3	3	2.5	4.5	4	3	2.5	3	3	2.5	4.5	4.5	4	3.5	4.5	4.5	3.5	4.5	3.5	4	4.5	3.5	3	4.5	4.5	3.5
9019	4.5	4.5	4.5	4	4	3.5	4	4	4	4.5	4	4	3.5	4	4	4	4.5	4.5	4.5	4	4.5	4.5	4.5	4.5	3.5	4.5	4.5	4	3.5	4	4.5	4

ISO STANDARDS

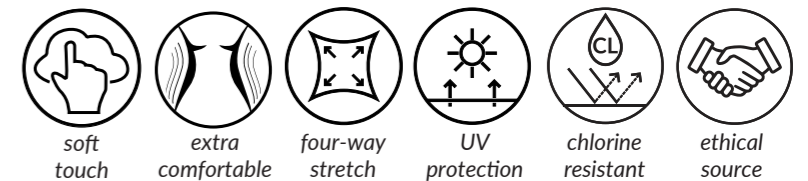
COLOR	CHLORINATED WATER ISO 105-E03	LIGHT ISO 105-B02	WATER ISO 105-E01			SEA WATER ISO 105-E02			ALKALINE PERSPIRATION PH 8.0 ISO 105-E04			ACID PERSPIRATION PH 5.5 ISO 105-E04			CROCKING ISO 105-X12		WASHING 40°C ISO 105-C06 A25		
	C.C.	C.C.	C.C.	CO	PA	C.C.	CO	PA	C.C.	CO	PA	C.C.	CO	PA	S.CO DRY	S.CO WET	C.C.	CO	PA
	1010	2-3	3	4-5	5	5	4-5	5	5	4-5	5	5	4-5	5	5	5	5	4-5	5
1210	2-3	3	4-5	5	5	4-5	5	5	4-5	5	5	4-5	5	5	5	5	4-5	5	5
0614	3-4	4-5	4-5	4-5	4	4-5	4-5	4	4-5	4-5	4	4-5	4-5	4	4-5	3	4-5	4-5	4
5316	2	3	4-5	4	3	4-5	4	3-4	4-5	3-4	3	4-5	4	3	4-5	3-4	4-5	3-4	3-4
9019	4-5	4-5	4-5	4-5	4	4-5	4-5	4	4-5	4-5	4	4-5	4-5	4	4-5	3-4	4-5	4-5	3-4

Available colors: The 4 colors presented on this page are always available for sampling. If you would like to choose a color from the main **Matte Nylon** color card, you can enjoy a MCQ of only 77yd for bulk orders. However, the resulting color shade and the color fastness performance may be slightly different. We will submit to your attention a lab dip swatch for approval before going to bulk production.

Special notes/warnings: It is advisable to test in lab color combinations, molding, bonding and applications on fabric in order to avoid problems during garment production. Please carefully check physical data and color fastness forecasts.



JUSTIN





JAGUAR

APPLICATIONS

> Activewear

Jaguar represents the new era of activewear fabrics. Excellent coverage and control due to enhanced stretch ability and its peached finish. It's the best choice for comfortable and high-performing garments.



6319 black



0614 amaranta



3010 white - 3610 white PFP



5316 new blu cina

Composition

Nylon		Elastane	
78%		22%	
Weight (±5%)		Width (+3%/-2%)	
230g/m ²	345g/m lin.	150 cm	
Courses	Wales	Tolerance for composition (standard ASTM)	
48/cm	25/cm	± 3%	
Dimensional Change of fabric after HL		Max	Max
AATCC 135-2015 (1 wash, normal cycle at 41 degree Celsius line dry)		-5%	-5%
		Width	Length
Resistance to pilling		4 to 4.5	
ASTM D 3512-Random tumble at 30 minutes photographic rating STD			
Ultraviolet Protection Factor (U.P.F.) AATCC 183-2010		50+	
Stretch to dynamometer (±15%ASTM D 4964 - LOAD 20 LBS)		120%	170%
		Width	Length
		(min 102% - max 138%)	(min 145% - max 196%)
		30% 50% 70%	30% 50% 70%
Modulus % elongation (30% - 50% - 70%)		0.1-0.7	0.7-1.5 1.5-3.0 0.2-0.8 0.8-1.5 1.5-2.5
		Width Lbs	Length Lbs
Care labelling codes			

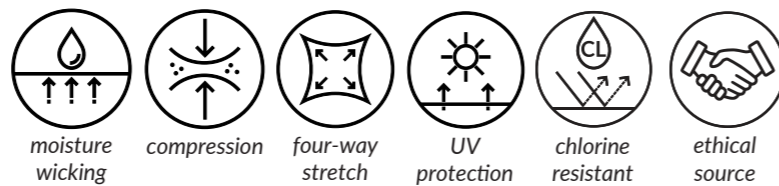
AATCC STANDARDS

COLOR	CHLORINATED WATER AATCC 162		LIGHT AATCC 16-20 AFU		WATER 38°C AATCC 107							SEA WATER 38°C AATCC 106							PERSPIRATION AATCC 15							CROCKING AATCC 8		WASHING 49°C AATCC 61-2A						
	C.C.	C.C.	C.C.	AC	CO	PA	PL	PC	WO	C.C.	AC	CO	PA	PL	PC	WO	C.C.	AC	CO	PA	PL	PC	WO	S.CO DRY	S.CO WET	C.C.	AC	CO	PA	PL	PC	WO		
	3010	3	3.5	4.5	5	5	5	5	5	5	4.5	5	5	5	5	5	5	4.5	5	5	5	5	5	5	5	5	4.5	5	5	5	5	5	5	
3610	3	3.5	4.5	5	5	5	5	5	5	4.5	5	5	5	5	5	5	4.5	5	5	5	5	5	5	5	5	4.5	5	5	5	5	5			
0614	4	4.5	4.5	4.5	4	3.5	4.5	4.5	3.5	4.5	4.5	3.5	3.5	4.5	4.5	3.5	4.5	4.5	4.5	4.5	4.5	4.5	4.5	4.5	4.5	4	4.5	4.5	4	4.5	4.5	4		
5316	3	3	4.5	4	4	3	4	4	3	4.5	4.5	4	3	4	4	3	4.5	4.5	4.5	4	4.5	4.5	4	4.5	3.5	4	4	3.5	2.5	4	4.5	3		
6319	4.5	4.5	4.5	4	4	3	3.5	3.5	3.5	4.5	4.5	4.5	3.5	4	4	4	4.5	4.5	4.5	4	4.5	4.5	4.5	4.5	3	4.5	4	4	3	4	4.5	4		

ISO STANDARDS

COLOR	CHLORINATED WATER ISO 105-E03		LIGHT ISO 105-B02		WATER ISO 105-E01			SEA WATER ISO 105-E02			ALKALINE PERSPIRATION PH 8.0 ISO 105-E04			ACID PERSPIRATION PH 5.5 ISO 105-E04			CROCKING ISO 105-X12		WASHING 40°C ISO 105-C06 A2S		
	C.C.	50 mg/l	C.C.	C.C.	CO	PA	C.C.	CO	PA	C.C.	CO	PA	C.C.	CO	PA	S.CO DRY	S.CO WET	C.C.	CO	PA	
	3010	2-3	3-4	4-5	5	5	4-5	5	5	4-5	5	5	4-5	5	5	4-5	5	5	4-5	5	5
3610	2-3	3-4	4-5	5	5	4-5	5	5	4-5	5	5	4-5	5	5	4-5	5	5	4-5	5	5	
0614	3	4-5	4-5	4-5	4	4-5	4-5	4	4-5	4-5	4	4-5	4-5	4	4-5	3-4	4-5	4-5	4-5	4	
5316	2-3	3	4-5	4-5	3-4	4-5	4-5	3-4	4-5	4-5	3-4	4-5	4-5	3-4	4-5	3-4	4-5	3-4	4-5	3-4	
6319	4-5	4-5	4-5	4-5	4	4-5	4-5	4	4-5	4-5	4	4-5	4-5	4	4-5	3-4	4-5	4-5	4-5	3-4	

JAGUAR



Available colors: The 4 colors presented on this page are always available for sampling. If you would like to choose a color from the main **Matte Nylon** color card, you can enjoy a MCQ of only 77yd for bulk orders. However, the resulting color shade and the color fastness performance may be slightly different. We will submit to your attention a lab dip swatch for approval before going to bulk production.

Special notes/warnings: It is advisable to test in lab color combinations, molding, bonding and applications on fabric in order to avoid problems during garment production. Please carefully check physical data and color fastness forecasts.

LEO

APPLICATIONS

> Activewear > Sportswear

This medium-weight performance nylon fabric features a smooth texture and a hydrophilic finish. Leo's high modulus stretch makes it ideal for high-tech sportswear garments.



6119 black



0614 amaranta



3010 white - 3510 white PFP



5316 new blu cina

Composition		
Nylon	Elastane	
81%	19%	
Weight (±5%)	Width (+3%/-2%)	
210g/m ² 315g/m lin.	150 cm	
Courses	Wales	Tolerance for composition (standard ASTM)
40/cm	24 /cm	±3%
Dimensional Change of fabric after HL AATCC 135-2015 (1 wash, normal cycle at 41 degree Celsius line dry)	Max	Max
	-5%	-5%
Resistance to pilling ASTM D 3512-Random tumble at 30 minutes photographic rating STD	4 to 4.5	
	Width Length	
Ultraviolet Protection Factor (U.P.F.) AATCC 183-2010	50+	
	Width Length	
Stretch to dynamometer (±15%) ASTM D 4964 - LOAD 20 LBS	180%	90%
	Width	Length
Modulus % elongation (30% - 50% - 70%)	(min 153% - max 207%)	(min 77% - max 104%)
	30% 50% 70%	30% 50% 70%
	00-05 05-12 12-24 08-20 24-38 60-10	
Care labelling codes	Width Lbs	Length Lbs

AATCC STANDARDS

COLOR	CHLORINATED WATER	LIGHT	WATER 38°C								SEA WATER 38°C								PERSPIRATION								CROCKING				WASHING 49°C							
	AATCC 162	AATCC 16-20 AFU	AATCC 107								AATCC 106								AATCC 15								AATCC 8				AATCC 61-2A							
	C.C.	C.C.	C.C.	AC	CO	PA	PL	PC	WO	C.C.	AC	CO	PA	PL	PC	WO	C.C.	AC	CO	PA	PL	PC	WO	S.CO DRY	S.CO WET	C.C.	AC	CO	PA	PL	PC	WO						
3010	3	3.5	4.5	5	5	5	5	5	5	4.5	5	5	5	5	5	5	4.5	5	5	5	5	5	5	5	5	4.5	5	5	5	5	5							
3510	3	3.5	4.5	5	5	5	5	5	5	4.5	5	5	5	5	5	5	4.5	5	5	5	5	5	5	5	5	4.5	5	5	5	5	5							
0614	4	4.5	4.5	4.5	4.5	4	4.5	4.5	4.5	4.5	4	4	4.5	4.5	4	4.5	4.5	4.5	4.5	4.5	4.5	4.5	4.5	4.5	4	4.5	4.5	4.5	4	4.5	4.5	4						
5316	3	3	4.5	4	4	3	4	4	3	4.5	4.5	4	3	4	4	3	4.5	4.5	4.5	4	4.5	4.5	4	4.5	3.5	4	4	3.5	3	4	4.5	3.5						
6119	4.5	4.5	4.5	4	4	3	3.5	3.5	3.5	4.5	4.5	4.5	3.5	4	4	4	4.5	4.5	4.5	4	4.5	4.5	4.5	4.5	3	4.5	4	4	3	4	4.5	4						

ISO STANDARDS

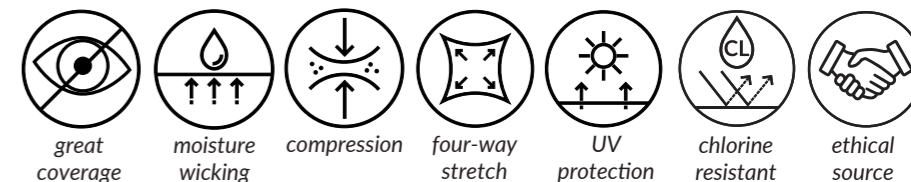
COLOR	CHLORINATED WATER	LIGHT	WATER				SEA WATER			ALKALINE PERSPIRATION PH 8.0			ACID PERSPIRATION PH 5.5			CROCKING		WASHING 40°C		
	ISO 105-E03	ISO 105-B02	ISO 105-E01				ISO 105-E02			ISO 105-E04			ISO 105-E04			ISO 105-X12		ISO 105-C06 A2S		
	C.C.	C.C.	C.C.	CO	PA	C.C.	CO	PA	C.C.	CO	PA	C.C.	CO	PA	S.CO DRY	S.CO WET	C.C.	CO	PA	
3010	2-3	3-4	4-5	5	5	4-5	5	5	4-5	5	5	4-5	5	5	5	5	4-5	5	5	
3510	2-3	3-4	4-5	5	5	4-5	5	5	4-5	5	5	4-5	5	5	5	5	4-5	5	5	
0614	3-4	4-5	4-5	4-5	4-5	4-5	4-5	4-5	4-5	4-5	4-5	4-5	4-5	4-5	4-5	4	4-5	4-5	4	
5316	2-3	3	4-5	4-5	4	4-5	4-5	4	4-5	4-5	4	4-5	4-5	4	4-5	3-4	4-5	4	3-4	
6119	4-5	4-5	4-5	4-5	4	4-5	4-5	4	4-5	4-5	4	4-5	4-5	4	4-5	3-4	4-5	4-5	3-4	

Available colors: The 4 colors presented on this page are always available for sampling. If you would like to choose a color from the main **Matte Nylon** color card, you can enjoy a MCQ of only 77yd for bulk orders. However, the resulting color shade and the color fastness performance may be slightly different. We will submit to your attention a lab dip swatch for approval before going to bulk production.

Special notes/warnings: It is advisable to test in lab color combinations, molding, bonding and applications on fabric in order to avoid problems during garment production. Please carefully check physical data and color fastness forecasts.



LEO



2023 - 2024

MATTE

RECYCLED NYLON

COLLECTION

swim - active - fashion

KIRA RECYCLED
SAND RECYCLED
CLOUD RECYCLED
WIND RECYCLED
PALM RECYCLED
OCEAN RECYCLED

KIRA REC

APPLICATIONS

> Swimwear > Beachwear

The revival of an old classic. Our best seller finds new life in its recycled version, without compromising the original versatility and performance.



Composition	
Recycled Nylon	Elastane
80%	20%
Weight	Width (+3%/-2%)
190g/m²	285g/m lin.
150cm	
Courses	Wales
45/cm	26/cm
Tolerance for composition (standard ASTM)	
±3%	
Dimensional Change of fabric after HL AATCC 135-2015 (1 wash, normal cycle at 41 degree Celsius line dry)	Max
	Max
Resistance to pilling ASTM D 3512-Random tumble at 30 minutes photographic rating STD	-5%
	-5%
Ultraviolet Protection Factor (U.P.F.) AATCC 183-2010	4 to 4.5
	50+
Stretch to dynamometer (±15%)	115%
	210%
Modulus % elongation (30% - 50% - 70%)	Width
	Length
Care labelling codes	Width Lbs
	Length Lbs

AATCC STANDARDS

COLOR	CHLORINATED WATER AATCC 162		LIGHT AATCC 16-20 AFU		WATER 38°C AATCC 107					SEA WATER 38°C AATCC 106					PERSPIRATION AATCC 15					CROCKING AATCC 8		WASHING 49°C AATCC 61-2A										
	C.C.	C.C.	C.C.	AC	CO	PA	PL	PC	WO	C.C.	AC	CO	PA	PL	PC	WO	C.C.	AC	CO	PA	PL	PC	WO	S.CO DRY	S.CO WET	C.C.	AC	CO	PA	PL	PC	WO
	0210	3	3	4.5	5	5	5	5	5	5	4.5	5	5	5	5	5	5	4.5	5	5	5	5	5	5	5	5	4.5	5	5	5	5	5
0120	3	3	4.5	5	5	5	5	5	5	4.5	5	5	5	5	5	5	4.5	5	5	5	5	5	5	5	5	4.5	5	5	5	5	5	5
0614	4.5	4.5	4.5	4.5	4.5	4.5	4.5	4.5	4.5	4.5	4.5	4.5	4.5	4.5	4.5	4.5	4.5	4.5	4.5	4.5	4.5	4.5	4.5	4.5	3.5	4.5	4.5	4.5	3.5	4.5	4.5	4.5
5316	3.5	3.5	4.5	4.5	4.5	3.5	4.5	4.5	4	4.5	4.5	4.5	3.5	4.5	4.5	3.5	4.5	4.5	4.5	4.5	4.5	4.5	4.5	4.5	3	4	4.5	3.5	3.5	4.5	4.5	4
0919	4.5	4.5	4.5	4.5	4	4	4.5	4.5	4	4.5	4.5	4	4	4.5	4.5	4	4.5	4.5	4.5	4.5	4.5	4.5	4.5	4.5	3	4.5	4.5	4	4	4.5	4.5	4

ISO STANDARDS

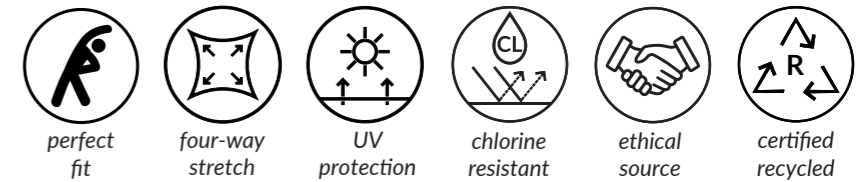
COLOR	CHLORINATED WATER ISO 105-E03	LIGHT ISO 105-B02	WATER ISO 105-E01			SEA WATER ISO 105-E02			ALKALINE PERSPIRATION PH 8.0 ISO 105-E04			ACID PERSPIRATION PH 5.5 ISO 105-E04			CROCKING ISO 105-X12		WASHING 40°C ISO 105-C06 A25		
	C.C.	C.C.	C.C.	CO	PA	C.C.	CO	PA	C.C.	CO	PA	C.C.	CO	PA	S.CO DRY	S.CO WET	C.C.	CO	PA
	0210	2-3	3	4-5	5	5	4-5	5	5	4-5	5	5	4-5	5	5	5	5	4-5	5
0120	2-3	3	4-5	5	5	4-5	5	5	4-5	5	5	4-5	5	5	5	5	4-5	5	5
0614	3-4	4-5	4-5	4-5	4-5	4-5	4-5	4-5	4-5	4-5	4-5	4-5	4-5	4-5	4	3-4	4-5	4-5	4
5316	2-3	3-4	4-5	4-5	4	4-5	4-5	4	4-5	4-5	4	4-5	4-5	4	4-5	3	4-5	4	4
0919	4-5	4-5	4-5	4-5	4	4-5	4-5	4	4-5	4-5	4	4-5	4-5	4	4-5	3	4-5	4-5	4

Available colors: The 4 colors presented on this page are always available for sampling. If you would like to choose a color from the main **Matte Nylon** color card, you can enjoy a MCQ of only 77yd for bulk orders. However, the resulting color shade and the color fastness performance may be slightly different. We will submit to your attention a lab dip swatch for approval before going to bulk production.

Special notes/warnings: It is advisable to test in lab color combinations, molding, bonding and applications on fabric in order to avoid problems during garment production. Please carefully check physical data and color fastness forecasts.



KIRA REC





SAND REC

APPLICATIONS

> Swimwear > Beachwear

An excellent choice for your fashion beachwear collections. Made with 100% recycled nylon, it is a very versatile fabric, remarkable for its convenience, flexibility and simplicity.



Composition			
Recycled Nylon	Elastane		
80%	20%		
Weight	Width (+3%/-2%)		
175g/m²	263g/m lin.	150cm	
Courses	Wales	Tolerance for composition (standard ASTM)	
45/cm	22/cm	±3%	
Dimensional Change of fabric after HL AATCC 135-2015 (1 wash, normal cycle at 41 degree Celsius line dry)	Max	Max	
	-5%	-5%	
Resistance to pilling ASTM D 3512-Random tumble at 30 minutes photographic rating STD	Width	Length	
	4 to 4.5		
Ultraviolet Protection Factor (U.P.F.) AATCC 183-2010	50+		
	115%	185%	
Stretch to dynamometer (±15%)	Width	Length	
	(min 98% - max 132%)	(min 157% - max 213%)	
Modulus % elongation (30% - 50% - 70%)	30%	50%	70%
	0.25-0.6	0.7-1.4	1.4-2.9
Care labelling codes	Width Lbs	Length Lbs	

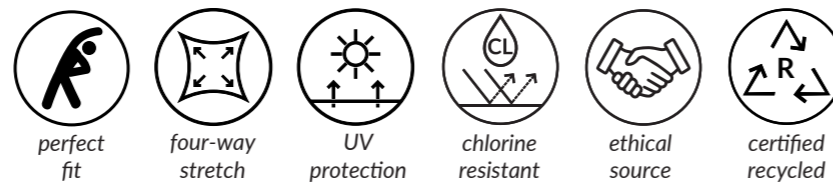
AATCC STANDARDS

COLOR	CHLORINATED WATER AATCC 162		LIGHT AATCC 16-20 AFU		WATER 38°C AATCC 107						SEA WATER 38°C AATCC 106						PERSPIRATION AATCC 15						CROCKING AATCC 8		WASHING 49°C AATCC 61-2A							
	C.C.	C.C.	C.C.	AC	CO	PA	PL	PC	WO	C.C.	AC	CO	PA	PL	PC	WO	C.C.	AC	CO	PA	PL	PC	WO	S.CO DRY	S.CO WET	C.C.	AC	CO	PA	PL	PC	WO
	0210	3	3	4.5	5	5	5	5	5	5	4.5	5	5	5	5	5	5	4.5	5	5	5	5	5	5	5	5	4.5	5	5	5	5	5
0120	3	3	4.5	5	5	5	5	5	5	4.5	5	5	5	5	5	5	4.5	5	5	5	5	5	5	5	5	4.5	5	5	5	5	5	5
0614	4.5	4.5	4.5	4.5	4.5	4.5	4.5	4.5	4.5	4.5	4.5	4.5	4.5	4.5	4.5	4.5	4.5	4.5	4.5	4.5	4.5	4.5	4.5	4	3	4	4.5	4.5	3.5	4.5	4.5	4.5
5316	3.5	3.5	4.5	4.5	4.5	3.5	4.5	4.5	4	4.5	4.5	4.5	3.5	4.5	4.5	3.5	4.5	4.5	4.5	4.5	4.5	4.5	4.5	4.5	3	4	4.5	3.5	3.5	4.5	4.5	4
0919	4.5	4.5	4.5	4.5	4	4	4.5	4.5	4	4.5	4.5	4	4	4.5	4.5	4	4.5	4.5	4.5	4.5	4.5	4.5	4.5	4.5	3	4.5	4.5	4	4	4.5	4.5	4

ISO STANDARDS

COLOR	CHLORINATED WATER ISO 105-E03		LIGHT ISO 105-B02		WATER ISO 105-E01			SEA WATER ISO 105-E02			ALKALINE PERSPIRATION PH 8.0 ISO 105-E04			ACID PERSPIRATION PH 5.5 ISO 105-E04			CROCKING ISO 105-X12		WASHING 40°C ISO 105-C06 A25		
	C.C.	50 mg/l	C.C.	C.C.	CO	PA	C.C.	CO	PA	C.C.	CO	PA	C.C.	CO	PA	S.CO DRY	S.CO WET	C.C.	CO	PA	
	0210	2-3	3	4-5	5	5	5	4-5	5	5	4-5	5	5	4-5	5	5	5	5	4-5	5	5
0120	2-3	3	4-5	5	5	5	4-5	5	5	4-5	5	5	4-5	5	5	5	5	4-5	5	5	
0614	3-4	4-5	4-5	4-5	4-5	4-5	4-5	4-5	4-5	4-5	4-5	4-5	4-5	4-5	4-5	4	3	4-5	4-5	4	
5316	2-3	3-4	4-5	4-5	4	4-5	4-5	4	4-5	4-5	4	4-5	4-5	4	4-5	4-5	3	4-5	4	4	
0919	4-5	4-5	4-5	4-5	4	4-5	4-5	4	4-5	4-5	4	4-5	4-5	4	4-5	4-5	3	4-5	4-5	4	

SAND REC



Available colors: The 4 colors presented on this page are always available for sampling. If you would like to choose a color from the main Matte Nylon color card, you can enjoy a MCQ of only 77yd for bulk orders. However, the resulting color shade and the color fastness performance may be slightly different. We will submit to your attention a lab dip swatch for approval before going to bulk production.

Special notes/warnings: It is advisable to test in lab color combinations, molding, bonding and applications on fabric in order to avoid problems during garment production. Please carefully check physical data and color fastness forecasts.



CLOUD REC

APPLICATIONS

> Swimwear > Beachwear > Underwear

Ultra-light with a buttery soft hand, Cloud Rec is made with 100% Recycled Nylon. It is perfect for sophisticated lining on a swimsuit and for intimates.



7219 black

0614 amaranta



5710 white - 1210 white PFP

5316 new blu cina

Composition	
Recycled Nylon	Elastane
87%	13%
Weight	Width (+3%/-2%)
135g/m²	202g/m lin.
150cm	
Courses	Wales
38/cm	28/cm
Tolerance for composition (standard ASTM)	
±3%	
Dimensional Change of fabric after HL AATCC 135-2015 (1 wash, normal cycle at 41 degree Celsius line dry)	Max
	Max
Resistance to pilling ASTM D 3512-Random tumble at 30 minutes photographic rating STD	-5%
	-5%
Ultraviolet Protection Factor (U.P.F.) AATCC 183-2010	4 to 4.5
	40/50+
Stretch to dynamometer (±15%)	125%
	130%
Modulus % elongation (30% - 50% - 70%)	Width
	Length
Care labelling codes	(min 106% - max 144%)
	(min 110% - max 149%)
Modulus % elongation (30% - 50% - 70%)	30% 50% 70%
	30% 50% 70%
Care labelling codes	00-03 0.3-0.7 0.7-1.9 0.1-0.5 0.5-1.0 1.0-2.0
	Width Lbs Length Lbs
Care labelling codes	40
	40

AATCC STANDARDS

COLOR	CHLORINATED WATER AATCC 162	LIGHT AATCC 16-20 AFU	WATER 38°C AATCC 107								SEA WATER 38°C AATCC 106								PERSPIRATION AATCC 15								CROCKING AATCC 8		WASHING 49°C AATCC 61-2A							
	C.C.	C.C.	C.C.	AC	CO	PA	PL	PC	WO	C.C.	AC	CO	PA	PL	PC	WO	C.C.	AC	CO	PA	PL	PC	WO	S.CO DRY	S.CO WET	C.C.	AC	CO	PA	PL	PC	WO				
	5710	3	3	4.5	5	5	5	5	5	5	4.5	5	5	5	5	5	5	4.5	5	5	5	5	5	5	5	5	4.5	5	5	5	5	5	5			
1210	3	3	4.5	5	5	5	5	5	5	4.5	5	5	5	5	5	5	4.5	5	5	5	5	5	5	5	5	4.5	5	5	5	5	5	5				
0614	4	4.5	4.5	4	3.5	3.5	4	4	3.5	4.5	4	3.5	3.5	4	3.5	3.5	4.5	4.5	4.5	4.5	4.5	4.5	4.5	4.5	4.5	3	4.5	4.5	4.5	3	4	4.5	4.5			
5316	3	3.5	4.5	3.5	3	2.5	3	3	2.5	4.5	4	3	2.5	3	3	2.5	4.5	4.5	4	3.5	4.5	4.5	3.5	4.5	3.5	4	4.5	3.5	3	4.5	4.5	3.5				
7219	4.5	4.5	4.5	4	4	3.5	3.5	4	3.5	4.5	4.5	4	3.5	4	4.5	4	4.5	4.5	4	4.5	4.5	4.5	4.5	4.5	3	4.5	4.5	4	3.5	4	4.5	4				

ISO STANDARDS

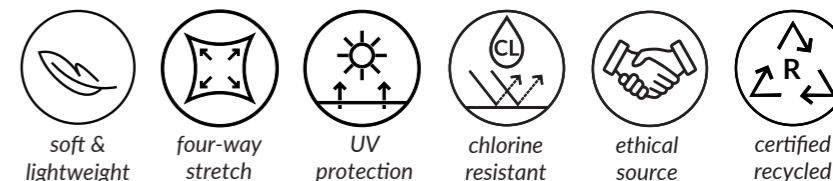
COLOR	CHLORINATED WATER ISO 105-E03	LIGHT ISO 105-B02	WATER ISO 105-E01				SEA WATER ISO 105-E02			ALKALINE PERSPIRATION PH 8.0 ISO 105-E04			ACID PERSPIRATION PH 5.5 ISO 105-E04			CROCKING ISO 105-X12		WASHING 40°C ISO 105-C06 A25		
	C.C.	C.C.	C.C.	CO	PA	C.C.	CO	PA	C.C.	CO	PA	C.C.	CO	PA	S.CO DRY	S.CO WET	C.C.	CO	PA	
	5710	2-3	3	4-5	5	5	4-5	5	5	4-5	5	5	4-5	5	5	5	5	4-5	5	5
1210	2-3	3	4-5	5	5	4-5	5	5	4-5	5	5	4-5	5	5	5	5	4-5	5	5	
0614	3-4	4-5	4-5	4-5	4	4-5	4-5	4	4-5	4-5	4	4-5	4-5	4	4-5	3	4-5	4-5	3-4	
5316	2-3	3-4	4-5	4	3-4	4-5	4	3-4	4-5	3-4	3	4-5	4	3	4-5	3-4	4-5	3-4	3-4	
7219	4-5	4-5	4-5	4-5	4	4-5	4-5	4	4-5	4-5	4	4-5	4-5	4	4-5	3	4-5	4-5	3-4	

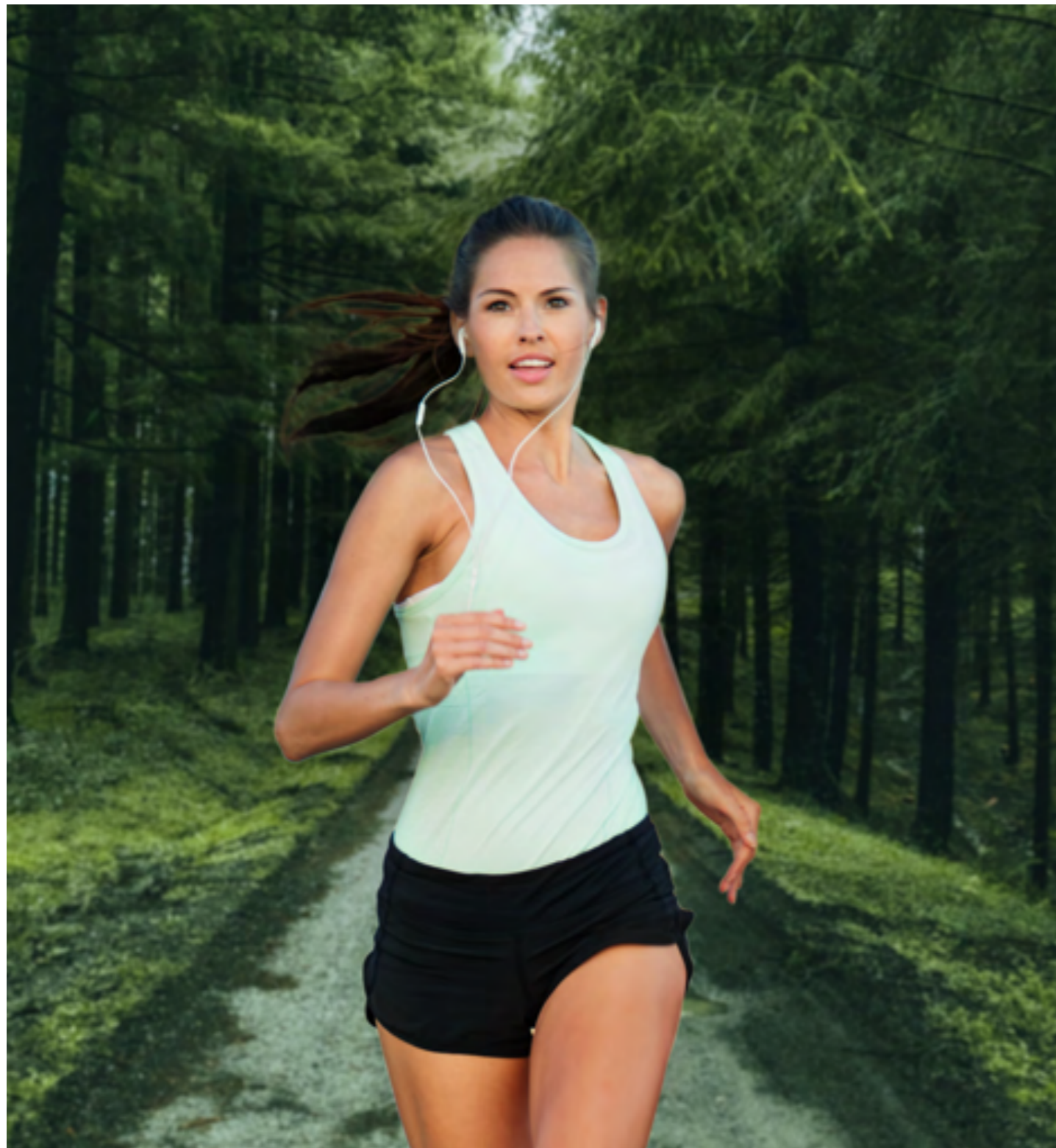
Available colors: The 4 colors presented on this page are always available for sampling. If you would like to choose a color from the main Matte Nylon color card, you can enjoy a MCQ of only 77yd for bulk orders. However, the resulting color shade and the color fastness performance may be slightly different. We will submit to your attention a lab dip swatch for approval before going to bulk production.

Special notes/warnings: It is advisable to test in lab color combinations, molding, bonding and applications on fabric in order to avoid problems during garment production. Please carefully check physical data and color fastness forecasts.



CLOUD REC





WIND REC

APPLICATIONS

- > Swimwear > Beachwear > Activewear
- > Underwear

This thin, light fabric is made with 100% recycled polyamide. Wind Rec is very versatile and suitable for numerous applications including swimwear, intimates, and t-shirts.



Composition			
Recycled Nylon	Elastane		
77%	23%		
Weight	Width (+3%/-2%)		
155 g/m²	230g/m lin.	146 cm	
Courses	Wales	Tolerance for composition (standard ASTM)	
49/cm	29/cm	±3%	
Dimensional Change of fabric after HL AATCC 135-2015 (1 wash, normal cycle at 41 degree Celsius line dry)	Max	Max	
	-5%	-5%	
	Width	Length	
Resistance to pilling ASTM D 3512-Random tumble at 30 minutes photographic rating STD	4 to 4.5		
Ultraviolet Protection Factor (U.P.F.) AATCC 183-2010	50+		
Stretch to dynamometer (±15%)	174%	95%	
	Width	Length	
	(min 148% - max 200%)	(min 84% - max 114%)	
Modulus % elongation (30% - 50% - 70%)	30%	50%	70%
	0.1-0.3	0.3-1.0	1.0-1.8
	0.6-1.2	1.3-2.8	3.0-6.2
Care labelling codes			

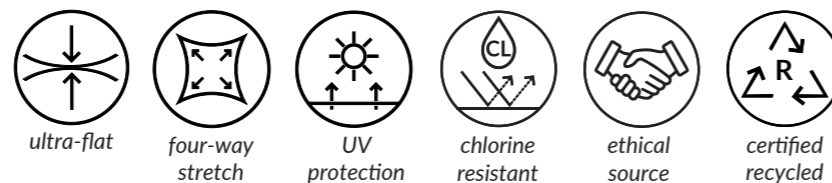
AATCC STANDARDS

COLOR	CHLORINATED WATER AATCC 162		LIGHT AATCC 16-20 AFU		WATER 38°C AATCC 107								SEA WATER 38°C AATCC 106								PERSPIRATION AATCC 15								CROCKING AATCC 8		WASHING 49°C AATCC 61-2A							
	C.C.	C.C.	C.C.	AC	CO	PA	PL	PC	WO	C.C.	AC	CO	PA	PL	PC	WO	C.C.	AC	CO	PA	PL	PC	WO	S.CO DRY	S.CO WET	C.C.	AC	CO	PA	PL	PC	WO						
	5710	3	3	4.5	5	5	5	5	5	5	4.5	5	5	5	5	5	5	4.5	5	5	5	5	5	5	5	5	4.5	5	5	5	5	5	5					
1210	3	3	4.5	5	5	5	5	5	5	4.5	5	5	5	5	5	5	4.5	5	5	5	5	5	5	5	5	4.5	5	5	5	5	5	5						
0614	4	4.5	4.5	4	3.5	3.5	4	4	3.5	4.5	4	3.5	3.5	4	3.5	3.5	4.5	4.5	4.5	4.5	4.5	4.5	4.5	4.5	3	4.5	4.5	4.5	3	4	4.5	4.5						
5316	3	3.5	4.5	3.5	3	2.5	3	3	2.5	4.5	4	3	2.5	3	3	2.5	4.5	4.5	4	3.5	4.5	4.5	3.5	4.5	3.5	4	4.5	3.5	3	4.5	4.5	3.5						
7219	4.5	4.5	4.5	4	4	3.5	3.5	4	3.5	4.5	4.5	4	3.5	4	4.5	4	4.5	4.5	4	4.5	4.5	4.5	4.5	3	4.5	4.5	4	3.5	4	4.5	4							

ISO STANDARDS

COLOR	CHLORINATED WATER ISO 105-E03	LIGHT ISO 105-B02	WATER ISO 105-E01				SEA WATER ISO 105-E02			ALKALINE PERSPIRATION PH 8.0 ISO 105-E04			ACID PERSPIRATION PH 5.5 ISO 105-E04			CROCKING ISO 105-X12		WASHING 40°C ISO 105-C06 A25		
	C.C.	C.C.	C.C.	CO	PA	C.C.	CO	PA	C.C.	CO	PA	C.C.	CO	PA	S.CO DRY	S.CO WET	C.C.	CO	PA	
	5710	2-3	3	4-5	5	5	4-5	5	5	4-5	5	5	4-5	5	5	5	5	4-5	5	5
1210	2-3	3	4-5	5	5	4-5	5	5	4-5	5	5	4-5	5	5	5	5	4-5	5	5	
0614	3-4	4-5	4-5	4-5	4	4-5	4-5	4	4-5	4-5	4	4-5	4-5	4	4-5	3	4-5	4-5	3-4	
5316	2-3	3-4	4-5	4	3-4	4-5	4	3-4	4-5	3-4	3	4-5	4	3	4-5	3-4	4-5	3-4	3-4	
7219	4-5	4-5	4-5	4-5	4	4-5	4-5	4	4-5	4-5	4	4-5	4-5	4	4-5	3	4-5	4-5	3-4	

WIND REC



Available colors: The 4 colors presented on this page are always available for sampling. If you would like to choose a color from the main **Matte Nylon** color card, you can enjoy a MCQ of only 77yd for bulk orders. However, the resulting color shade and the color fastness performance may be slightly different. We will submit to your attention a lab dip swatch for approval before going to bulk production.

Special notes/warnings: It is advisable to test in lab color combinations, molding, bonding and applications on fabric in order to avoid problems during garment production. Please carefully check physical data and color fastness forecasts.



PALM REC

APPLICATIONS

> Swimwear > Beachwear

A comfortable fabric with a soft hand made with 100% recycled polyamide. The buttery touch and the high coverage makes it suitable for new generation beachwear.



7219 black

0614 amaranta



5710 white - 1210 white PFP 5316 new blu cina

Composition						
Recycled Polyamide	Elastane					
80%	20%					
Weight	Width (+3%/-2%)					
180 g/m² 270g/m lin.	150 cm					
Courses	Wales	Tolerance for composition (standard ASTM)				
48/cm	28/cm	±3%				
Dimensional Change of fabric after HL AATCC 135-2015 (1 wash, normal cycle at 41 degree Celsius line dry)	Max	Max				
	-5%	-5%				
Resistance to pilling ASTM D 3512-Random tumble at 30 minutes photographic rating STD	Width	Length				
	4 to 4.5					
Ultraviolet Protection Factor (U.P.F.) AATCC 183-2010	50+					
	95%	165%				
Stretch to dynamometer (±15%)	Width	Length				
	(min 81% - max 109%) (min 140% - max 190%)					
Modulus % elongation (30% - 50% - 70%)	30%	50%	70%	30%	50%	70%
	0.3-1.0	1.1-2.3	3.2-6.6	0.1-0.6	0.6-1.2	1.2-2.0
Care labelling codes	Width Lbs		Length Lbs			

AATCC STANDARDS

COLOR	CHLORINATED WATER AATCC 162		LIGHT AATCC 16-20 AFU		WATER 38°C AATCC 107					SEA WATER 38°C AATCC 106					PERSPIRATION AATCC 15					CROCKING AATCC 8		WASHING 49°C AATCC 61-2A										
	C.C.	C.C.	C.C.	AC	CO	PA	PL	PC	WO	C.C.	AC	CO	PA	PL	PC	WO	C.C.	AC	CO	PA	PL	PC	WO	S.CO DRY	S.CO WET	C.C.	AC	CO	PA	PL	PC	WO
	5710	3	3	4.5	5	5	5	5	5	5	4.5	5	5	5	5	5	5	4.5	5	5	5	5	5	5	5	5	4.5	5	5	5	5	5
1210	3	3	4.5	5	5	5	5	5	5	4.5	5	5	5	5	5	5	4.5	5	5	5	5	5	5	5	5	4.5	5	5	5	5	5	5
0614	4	4.5	4.5	4.5	3.5	3.5	4	4	3.5	4.5	4	3.5	3.5	4	3.5	3.5	4.5	4.5	4.5	4.5	4.5	4.5	4.5	4.5	4.5	3	4.5	4.5	4.5	3.5	4.5	4
5316	3	3	4.5	4	3.5	3	3.5	3.5	3	4.5	4	3.5	3	3.5	3.5	3	4.5	4.5	4.5	4	4.5	4.5	4	4.5	3.5	4	4.5	3.5	3	4.5	4.5	3.5
7219	4.5	4.5	4.5	4	4	3.5	3.5	4	3.5	4.5	4.5	4	3.5	4	4.5	4	4.5	4.5	4.5	4	4.5	4.5	4.5	4.5	3	4.5	4.5	4	3.5	4	4.5	4

ISO STANDARDS

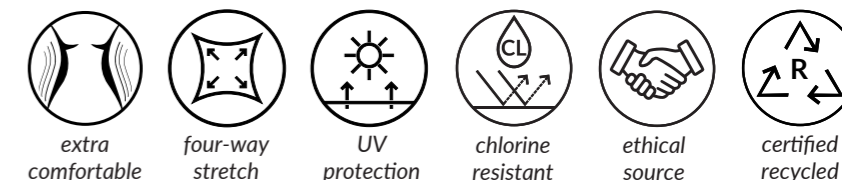
COLOR	CHLORINATED WATER ISO 105-E03		LIGHT ISO 105-B02		WATER ISO 105-E01			SEA WATER ISO 105-E02			ALKALINE PERSPIRATION PH 8.0 ISO 105-E04			ACID PERSPIRATION PH 5.5 ISO 105-E04			CROCKING ISO 105-X12		WASHING 40°C ISO 105-C06 A25		
	C.C.	50 mg/l	C.C.	C.C.	CO	PA	C.C.	CO	PA	C.C.	CO	PA	C.C.	CO	PA	S.CO DRY	S.CO WET	C.C.	CO	PA	
	5710	2-3	3	4-5	5	5	5	4-5	5	5	4-5	5	5	4-5	5	5	5	5	4-5	5	5
1210	2-3	3	4-5	5	5	5	4-5	5	5	4-5	5	5	4-5	5	5	5	5	4-5	5	5	
0614	3-4	4-5	4-5	4-5	4	4	4-5	4-5	4	4-5	4-5	4	4-5	4-5	4	4-5	3	4-5	4-5	4	
5316	2-3	3	4-5	4-5	4	4	4-5	4-5	3-4	4-5	4	3-4	4-5	4-5	3-4	4-5	3-4	4-5	3-4	3-4	
7219	4-5	4-5	4-5	4-5	4	4	4-5	4-5	4	4-5	4-5	4	4-5	4-5	4	4-5	3	4-5	4-5	3-4	

Available colors: The 4 colors presented on this page are always available for sampling. If you would like to choose a color from the main Matte Nylon color card, you can enjoy a MCQ of only 77yd for bulk orders. However, the resulting color shade and the color fastness performance may be slightly different. We will submit to your attention a lab dip swatch for approval before going to bulk production.

Special notes/warnings: It is advisable to test in lab color combinations, molding, bonding and applications on fabric in order to avoid problems during garment production. Please carefully check physical data and color fastness forecasts.



PALM REC





OCEAN REC

APPLICATIONS

> Swimwear > Activewear

This soft-touch, high-spandex content fabric is made with 100% Recycled Nylon. Ocean Rec is suitable for swimwear, shapewear, control garments, and light activewear.



7219 black

0614 amaranta



5710 white - 1210 white PPF

5316 new blu cina

Composition		
Recycled Polyamide	Elastane	
74%	26%	
Weight	Width (+3%/-2%)	
200g/m²	300g/m lin.	150 cm
Courses	Wales	Tolerance for composition (standard ASTM)
48/cm	28/cm	±3%
Dimensional Change of fabric after HL AATCC 135-2015 (1 wash, normal cycle at 41 degree Celsius line dry)	Max	Max
	-5%	-5%
Resistance to pilling ASTM D 3512-Random tumble at 30 minutes photographic rating STD	Width	Length
	4 to 4.5	
Ultraviolet Protection Factor (U.P.F.) AATCC 183-2010	50+	
	88%	150%
Stretch to dynamometer (±15%)	Width	Length
	(min 74% - max 100%)	(min 123% - max 167%)
Modulus % elongation (30% - 50% - 70%)	30%	50%
	0.4-1.0	1.1-2.5
Care labelling codes	40	3
	40	3

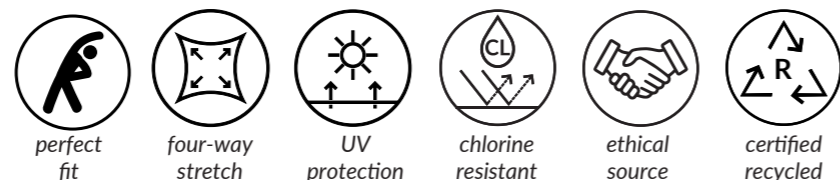
AATCC STANDARDS

COLOR	CHLORINATED WATER	LIGHT	WATER 38°C								SEA WATER 38°C								PERSPIRATION						CROCKING		WASHING 49°C					
	AATCC 162	AATCC 16-20 AFU	AATCC 107								AATCC 106								AATCC 15						AATCC 8		AATCC 61-2A					
	C.C.	C.C.	C.C.	AC	CO	PA	PL	PC	WO	C.C.	AC	CO	PA	PL	PC	WO	C.C.	AC	CO	PA	PL	PC	WO	S.CO DRY	S.CO WET	C.C.	AC	CO	PA	PL	PC	WO
5710	3	3	4.5	5	5	5	5	5	5	4.5	5	5	5	5	5	5	4.5	5	5	5	5	5	5	5	5	4.5	5	5	5	5	5	5
1210	3	3	4.5	5	5	5	5	5	5	4.5	5	5	5	5	5	5	4.5	5	5	5	5	5	5	5	5	4.5	5	5	5	5	5	5
0614	4	4.5	4.5	4.5	3.5	3.5	4	4	3.5	4.5	4	3.5	3.5	4	3.5	3.5	4.5	4.5	4.5	4.5	4.5	4.5	4.5	4.5	4.5	3	4.5	4.5	4.5	3.5	4.5	4
5316	3	3	4.5	4.5	4	3	4	4	3	4.5	4	4	3	4	4	3	4.5	4.5	4.5	4	4.5	4.5	4	4.5	3.5	4	4.5	3.5	3	4.5	4.5	3.5
7219	4.5	4.5	4.5	4	4	3.5	3.5	4	3.5	4.5	4.5	4	3.5	4	4.5	4	4.5	4.5	4.5	4	4.5	4.5	4.5	4.5	3	4.5	4.5	4	3.5	4	4.5	4

ISO STANDARDS

COLOR	CHLORINATED WATER	LIGHT	WATER				SEA WATER			ALKALINE PERSPIRATION PH 8.0			ACID PERSPIRATION PH 5.5			CROCKING		WASHING 40°C													
	ISO 105-E03	ISO 105-B02	ISO 105-E01				ISO 105-E02			ISO 105-E04			ISO 105-E04			ISO 105-X12		ISO 105-C06 A25													
	C.C.	C.C.	C.C.	CO	PA	C.C.	CO	PA	C.C.	CO	PA	C.C.	CO	PA	S.CO DRY	S.CO WET	C.C.	CO	PA												
5710	2-3	3	4-5	5	5	4-5	5	5	4-5	5	5	4-5	5	5	5	5	5	5	5	5	5	5	5	5	5	5	5	5	5	5	5
1210	2-3	3	4-5	5	5	4-5	5	5	4-5	5	5	4-5	5	5	5	5	5	5	5	5	5	5	5	5	5	5	5	5	5	5	5
0614	3-4	4-5	4-5	4-5	4	4-5	4-5	4	4-5	4-5	4	4-5	4-5	4	4-5	4-5	4	4-5	4-5	4	4-5	4-5	4	4-5	3	4-5	4-5	4-5	4	4	4
5316	2-3	3	4-5	4-5	4	4-5	4-5	3-4	4-5	4	3-4	4-5	4	3-4	4-5	4-5	3-4	4-5	3-4	4-5	3-4	4-5	3-4	4-5	3-4	4-5	3-4	4-5	3-4	3-4	3-4
7219	4-5	4-5	4-5	4-5	4	4-5	4-5	4	4-5	4-5	4	4-5	4-5	4	4-5	4-5	4	4-5	4-5	4	4-5	4-5	4	4-5	3	4-5	4-5	4-5	3-4	3-4	3-4

OCEAN REC



Available colors: The 4 colors presented on this page are always available for sampling. If you would like to choose a color from the main Matte Nylon color card, you can enjoy a MCQ of only 77yd for bulk orders. However, the resulting color shade and the color fastness performance may be slightly different. We will submit to your attention a lab dip swatch for approval before going to bulk production.

Special notes/warnings: It is advisable to test in lab color combinations, molding, bonding and applications on fabric in order to avoid problems during garment production. Please carefully check physical data and color fastness forecasts.