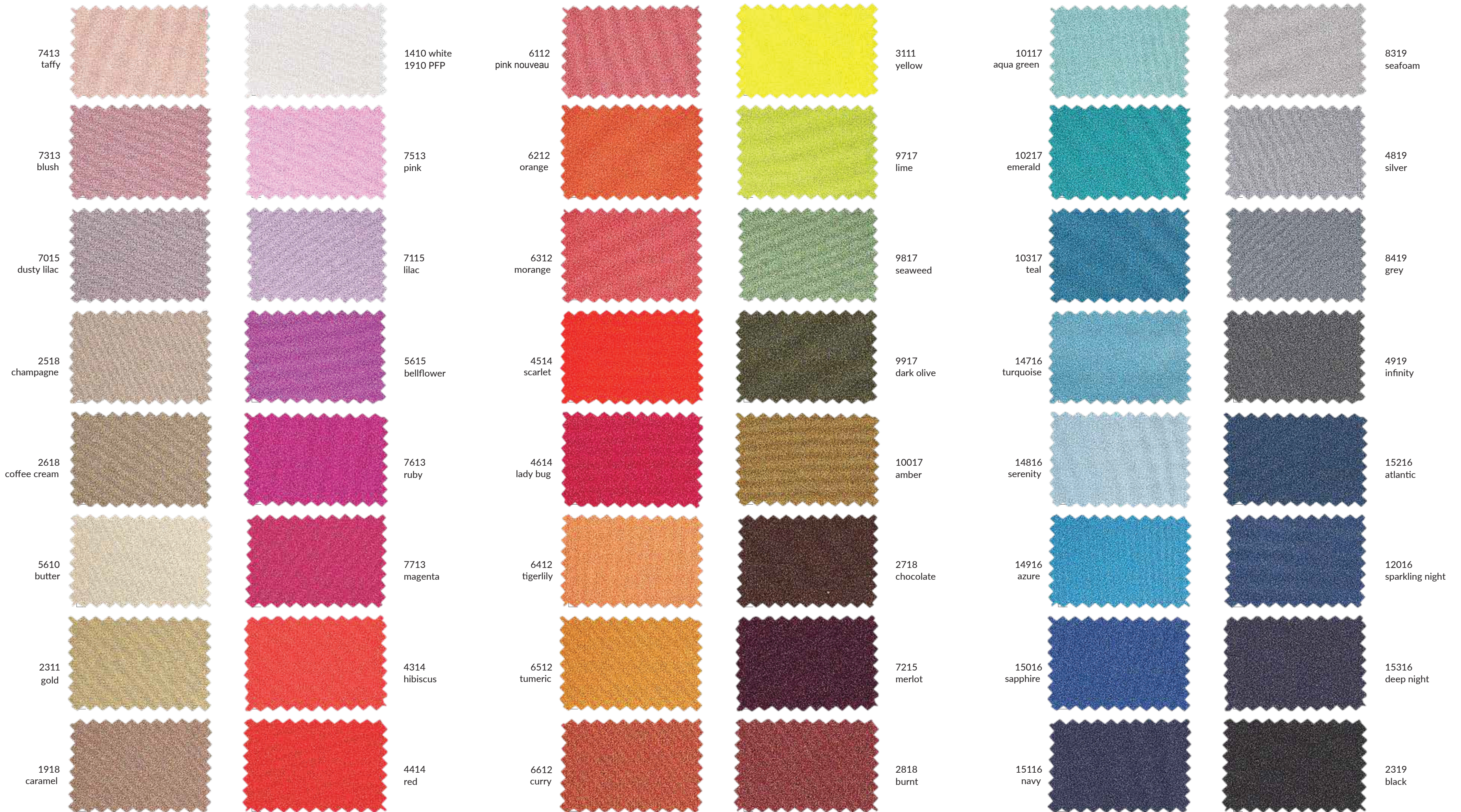


PINE CREST FABRIC | SHINY NYLON 2023-24



Color dyed with a particular sensitive dyestuff that might create a "blue stains" effect in conditions of high humidity and temperature. This effect can be eliminated: machine wash the garment with soap at 30°C, delicate tumbler dry or hang to dry

PLEASE PAY SPECIAL ATTENTION to the fastness values declared in the chart. Combination of colors is not recommended when the fastness values of Washing, Water and Sea Water are lower than 4-5.