

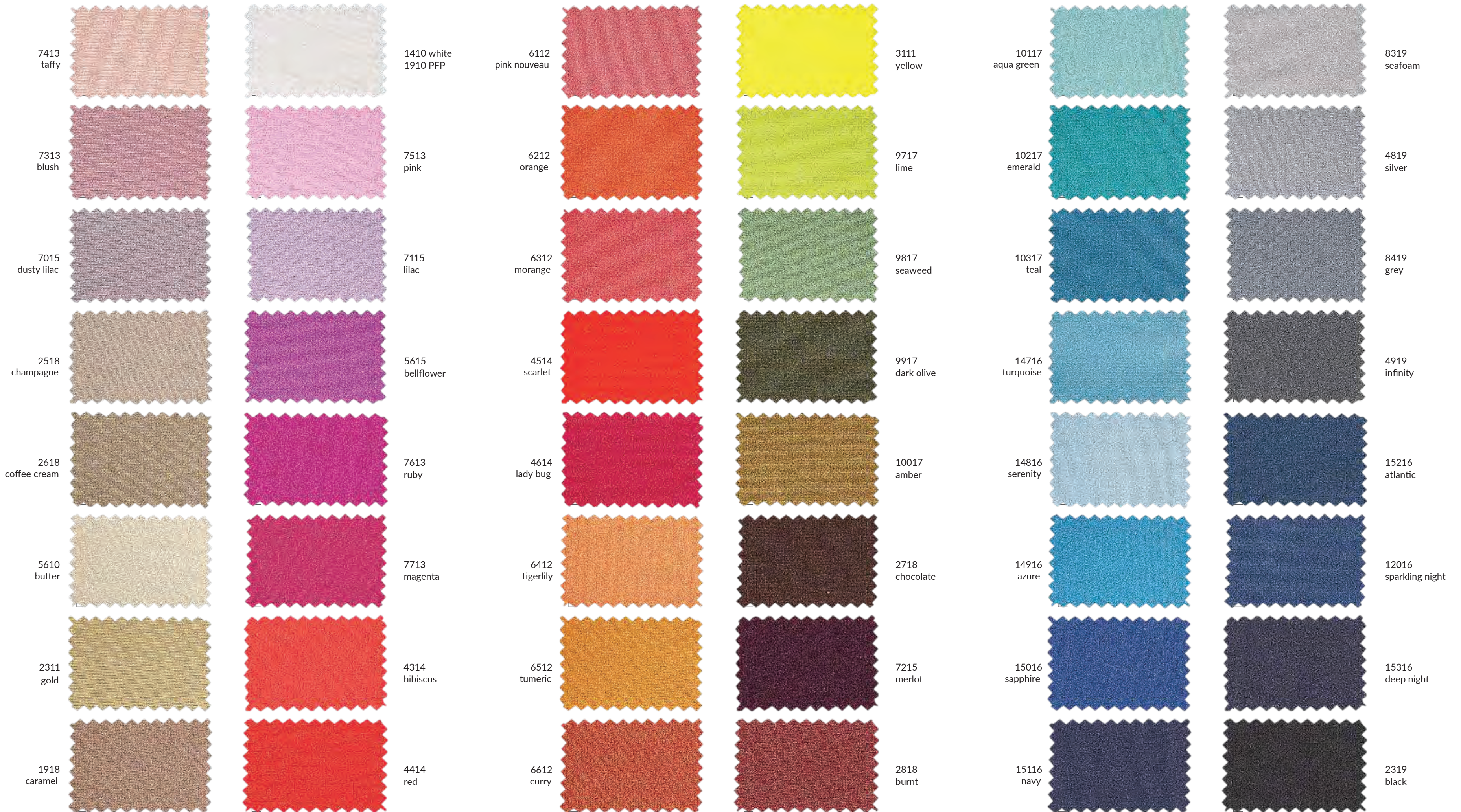
2023 - 2024

SHINY NYLON COLLECTION

swim - active - fashion

SHIRA
SHIRA LIGHT
SHIRA MOTION

PINE CREST FABRIC | SHINY NYLON 2023-24



Color dyed with a particular sensitive dyestuff that might create a "blue stains" effect in conditions of high humidity and temperature. This effect can be eliminated: machine wash the garment with soap at 30°C, delicate tumbler dry or hang to dry

PLEASE PAY SPECIAL ATTENTION to the fastness values declared in the chart. Combination of colors is not recommended when the fastness values of Washing, Water and Sea Water are lower than 4-5.

SHIRA

APPLICATIONS

> Swimwear > Beachwear

Made of glossy polyamide, Shira is not only glamorous and shiny, but also elastic and comfortable. These features make Shira ideal for elegant and high-fashion creations.



2319 black



9917 dark olive



1410 white - 1910 white PFP



2518 champagne

Composition		
Nylon	Elastane	
80%	20%	
Weight (±5%)	Width (+3%/-2%)	
190g/m²	285g/m lin.	
150cm		
Courses	Wales	
46/cm	26/cm	
Tolerance for composition (standard ASTM)		
±3%		
Dimensional Change of fabric after HL AATCC 135-2015 (1 wash, normal cycle at 41 degree Celsius line dry)	Max	
	Max	
	-5%	
	-5%	
	Width	
	Length	
Resistance to pilling ASTM D 3512-Random tumble at 30 minutes photographic rating	4 to 4.5	
Ultraviolet Protection Factor (U.P.F.) AATCC 183-2010	50+	
Stretch to dynamometer (±15%) ASTM D 4964 - LOAD 20 LBS	115%	210%
	Width	Length
	(min 98% - max 132%)	(min 179% - max 242%)
Modulus % elongation (30% - 50% - 70%)	30%	50%
	50%	70%
	0.4-1.0	1.0-1.8
	2.0-3.6	0.0-0.4
	0.4-0.8	0.8-1.6
	Width Lbs	Length Lbs
Care labelling codes		



AATCC Standards

COLOR	CHLORINATED WATER AATCC 162		LIGHT AATCC 16-20 AFU		WATER 38°C AATCC 107					SEA WATER 38°C AATCC 106					PERSPIRATION AATCC 15					CROCKING AATCC 8		WASHING 49°C AATCC 61-2A										
	C.C.	C.C.	C.C.	AC	CO	PA	PL	PC	WO	C.C.	AC	CO	PA	PL	PC	WO	C.C.	AC	CO	PA	PL	PC	WO	S.CO DRY	S.CO WET	C.C.	AC	CO	PA	PL	PC	WO
	1410	3	3	4.5	5	5	5	5	5	5	4.5	5	5	5	5	5	5	4.5	5	5	5	5	5	5	5	5	4.5	5	5	5	5	5
1910	3	3	4.5	5	5	5	5	5	5	4.5	5	5	5	5	5	5	4.5	5	5	5	5	5	5	5	5	4.5	5	5	5	5	5	5
9917	4	4.5	4.5	4.5	4.5	4	4.5	4.5	4	4.5	4.5	4.5	4	4.5	4.5	4	4.5	4.5	4.5	4.5	4.5	4.5	4.5	4.5	3.5	4	4.5	4.5	3.5	4.5	4.5	4
2518	4	4.5	4.5	4.5	4.5	4.5	4.5	4.5	4.5	4.5	4.5	4.5	4.5	4.5	4.5	4.5	4.5	4.5	4.5	4.5	4.5	4.5	4.5	4.5	4.5	4.5	4.5	4.5	4.5	4.5	4.5	4.5
2319	4.5	4.5	4.5	4	4.5	3.5	4.5	4.5	3.5	4.5	4	4.5	3.5	4.5	4.5	3.5	4.5	4.5	4.5	4.5	4	4.5	4.5	4	3	4.5	4	4.5	3.5	4.5	4.5	4

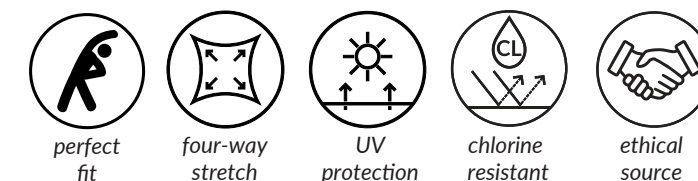
ISO Standards

COLOR	CHLORINATED WATER ISO 105-E03	LIGHT ISO 105-B02	WATER ISO 105-E01			SEA WATER ISO 105-E02			ALKALINE PERSPIRATION PH 8.0 ISO 105-E04			ACID PERSPIRATION PH 5.5 ISO 105-E04			CROCKING ISO 105-X12		WASHING 40°C ISO 105-C06 A25		
	C.C.	C.C.	C.C.	CO	PA	C.C.	CO	PA	C.C.	CO	PA	C.C.	CO	PA	S.CO DRY	S.CO WET	C.C.	CO	PA
	1410	2-3	3	4-5	5	5	4-5	5	5	4-5	5	5	4-5	5	5	5	5	4-5	5
1910	2-3	3	4-5	5	5	4-5	5	5	4-5	5	5	4-5	5	5	5	5	4-5	5	5
9917	4	4-5	4-5	4-5	4	4-5	4-5	4	4-5	4-5	4	4-5	4-5	4	4-5	3-4	4-5	4-5	4
2518	3	4-5	4-5	4-5	4-5	4-5	4-5	4-5	4-5	4-5	4-5	4-5	4-5	4-5	4-5	4-5	4-5	4-5	4-5
2319	4	4-5	4-5	4-5	4	4-5	4-5	4	4-5	4-5	4	4-5	4-5	4	4	3	4-5	4-5	4

Available colors: The 4 colors presented on this page are always available for sampling. If you would like to choose a color from the main Shiny Nylon color card, you can enjoy a MCQ of only 77yd for bulk orders. However, the resulting color shade and the color fastness performance may be slightly different. We will submit to your attention a lab dip swatch for approval before going to bulk production.

Special notes/warnings: It is advisable to test in lab color combinations, molding, bonding and applications on fabric in order to avoid problems during garment production. Please carefully check physical data and color fastness forecasts.

SHIRA





SHIRA LIGHT

APPLICATIONS

> Swimwear > Beachwear > Underwear

Absolute elegance at 170gsm: beautiful, shiny, and lightweight, Shira Light is ideal for the creation of stylish swimwear and dancewear collections.



2319 black



9917 dark olive



1410 white - 1910 white PFP



2518 champagne

Composition		
Nylon	Elastane	
80%	20%	
Weight(±5%)	Width (+3%/-2%)	
170 g/m²	255g/m lin.	150 cm
Courses	Wales	Tolerance for composition (standard ASTM)
41/cm	25/cm	±3%
Dimensional Change of fabric after HL AATCC 135-2015 (1 wash, normal cycle at 41 degree Celsius line dry)	Max	Max
	-5%	-5%
Resistance to pilling ASTM D 3512-Random tumble at 30 minutes photographic rating STD	Width	Length
	4 to 4.5	
Ultraviolet Protection Factor (U.P.F.) AATCC 183-2010	50+	
	110%	185%
Stretch to dynamometer (±15%)ASTM D 4964 - LOAD 20 LBS	Width	Length
	(min 94% - max 127%)	(min 157% - max 213%)
Modulus % elongation (30% - 50% - 70%)	30%	50%
	0.3-0.8	0.9-1.7
Care labelling codes	Width Lbs	Length Lbs
	40	40

AATCC Standards

COLOR	CHLORINATED WATER	LIGHT	WATER 38°C								SEA WATER 38°C								PERSPIRATION						CROCKING		WASHING 49°C							
	AATCC 162	AATCC 16-20 AFU	AATCC 107								AATCC 106								AATCC 15						AATCC 8		AATCC 61-2A							
	C.C.	C.C.	C.C.	AC	CO	PA	PL	PC	WO	C.C.	AC	CO	PA	PL	PC	WO	C.C.	AC	CO	PA	PL	PC	WO	S.CO DRY	S.CO WET	C.C.	AC	CO	PA	PL	PC	WO		
1410	3	3	4.5	5	5	5	5	5	5	4.5	5	5	5	5	5	5	4.5	5	5	5	5	5	5	5	5	4.5	5	5	5	5	5	5		
1910	3	3	4.5	5	5	5	5	5	5	4.5	5	5	5	5	5	5	4.5	5	5	5	5	5	5	5	5	4.5	5	5	5	5	5	5		
9917	4	4.5	4.5	4.5	4.5	4	4.5	4.5	4	4.5	4.5	4.5	4	4.5	4.5	4	4.5	4.5	4.5	4.5	4.5	4.5	4.5	4	3.5	4.5	4	4.5	3.5	4.5	4.5	4		
2518	3.5	4.5	4.5	4.5	4.5	4.5	4.5	4.5	4.5	4.5	4.5	4.5	4.5	4.5	4.5	4.5	4.5	4.5	4.5	4.5	4.5	4.5	4.5	4.5	4.5	4.5	4.5	4.5	4.5	4.5	4.5	4.5	4.5	
2319	4.5	4.5	4.5	4	4.5	3.5	4.5	4.5	3.5	4.5	4	4.5	3.5	4.5	4.5	3.5	4.5	4.5	4.5	4	4.5	4.5	4	4	3	4.5	4	4.5	3.5	4.5	4.5	4		

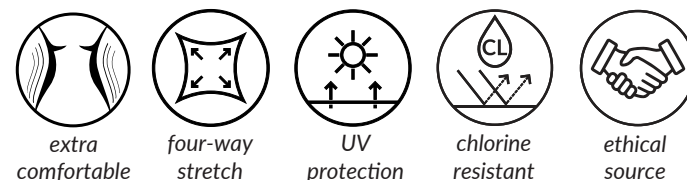
ISO Standards

COLOR	CHLORINATED WATER	LIGHT	WATER			SEA WATER			ALKALINE PERSPIRATION PH 8.0			ACID PERSPIRATION PH 5.5			CROCKING		WASHING 40°C		
	ISO 105-E03	ISO 105-B02	ISO 105-E01			ISO 105-E02			ISO 105-E04			ISO 105-E04			ISO 105-X12		ISO 105-C06 A2S		
	C.C.	C.C.	C.C.	CO	PA	C.C.	CO	PA	C.C.	CO	PA	C.C.	CO	PA	S.CO DRY	S.CO WET	C.C.	CO	PA
1410	2-3	3	4-5	5	5	4-5	5	5	4-5	5	5	4-5	5	5	5	5	4-5	5	5
1910	2-3	3	4-5	5	5	4-5	5	5	4-5	5	5	4-5	5	5	5	5	4-5	5	5
9917	3-4	4-5	4-5	4-5	4-5	4-5	4-5	4-5	4-5	4-5	4-5	4-5	4-5	4-5	4	3-4	4-5	4-5	4
2518	3	4-5	4-5	4-5	4-5	4-5	4-5	4-5	4-5	4-5	4-5	4-5	4-5	4-5	4-5	4-5	4-5	4-5	4-5
2319	4	4-5	4-5	4-5	4	4-5	4-5	4	4-5	4-5	4	4-5	4-5	4	4	3	4-5	4-5	4

Available colors: The 4 colors presented on this page are always available for sampling. If you would like to choose a color from the main Shiny Nylon color card, you can enjoy a MCQ of only 77yd for bulk orders. However, the resulting color shade and the color fastness performance may be slightly different. We will submit to your attention a lab dip swatch for approval before going to bulk production.

Special notes/warnings: It is advisable to test in lab color combinations, molding, bonding and applications on fabric in order to avoid problems during garment production. Please carefully check physical data and color fastness forecasts.

SHIRA LIGHT



SHIRA MOTION

APPLICATIONS

> Beachwear > Activewear

It's ideal to combine fashion, performance, and comfort. That's exactly what Shira Motion does. Due to its heavier weight, Shira Motion can ensure the best fit and comfort, good elasticity and vibrant shininess, for unique activewear and heavy swimwear garments.



2319 black



9917 dark olive



1410 white - 1910 white PFP



2518 champagne

Composition	
Nylon	Elastane
80%	20%
Weight (±5%)	Width (+3%/-2%)
220 g/m²	330g/m lin.
150cm	
Courses	Wales
42/cm	26/cm
Tolerance for composition (standard ASTM)	
±3%	
Dimensional Change of fabric after HL	
AATCC 135-2015 (1 wash, normal cycle at 41 degree Celsius line dry)	
Max	Max
-5%	-5%
Width	Length
Resistance to pilling	
ASTM D 3512-Random tumble at 30 minutes photographic rating STD	
4 to 4.5	
Ultraviolet Protection Factor (U.P.F.) AATCC 183-2010	
50+	
Stretch to dynamometer (±15%ASTM D 4964 - LOAD 20 LBS)	
105%	154%
Width	Length
(min 89% - max 121%) (min 131% - max 177%)	
30%	50%
70%	30%
50%	70%
0.3-0.7	0.8-1.7
1.8-3.8	0.3-0.8
0.9-1.8	1.8-3.0
Width Lbs	Length Lbs
Care labelling codes	



AATCC Standards

COLOR	CHLORINATED WATER AATCC 162		LIGHT AATCC 16-20 AFU		WATER 38°C AATCC 107				SEA WATER 38°C AATCC 106				PERSPIRATION AATCC 15				CROCKING AATCC 8		WASHING 49°C AATCC 61-2A					
	C.C.	C.C.	C.C.	AC	CO	PA	PL	PC	WO	C.C.	AC	CO	PA	PL	PC	WO	C.C.	AC	CO	PA	PL	PC	WO	
	DRY	WET	DRY	WET	DRY	WET	DRY	WET	DRY	WET	DRY	WET	DRY	WET	DRY	WET	DRY	WET	DRY	WET	DRY	WET	DRY	WET
1410	3.5	3	4.5	5	5	5	5	5	5	4.5	5	5	5	5	5	5	4.5	5	5	5	5	5	5	5
1910	3.5	3	4.5	5	5	5	5	5	5	4.5	5	5	5	5	5	5	4.5	5	5	5	5	5	5	5
9917	4	4.5	4.5	4.5	4.5	4	4.5	4.5	4	4.5	4.5	4.5	4	4.5	4.5	4	4.5	4.5	4.5	4.5	4.5	4.5	4.5	4
2518	4	4.5	4.5	4.5	4.5	4.5	4.5	4.5	4.5	4.5	4.5	4.5	4.5	4.5	4.5	4.5	4.5	4.5	4.5	4.5	4.5	4.5	4.5	4.5
2319	4.5	4.5	4.5	4	4	4	4.5	4.5	4	4.5	4	4	4	4.5	4.5	4	4.5	4.5	4.5	4.5	4.5	4.5	4	4

ISO Standards

COLOR	CHLORINATED WATER ISO 105-E03	LIGHT ISO 105-B02	WATER ISO 105-E01			SEA WATER ISO 105-E02			ALKALINE PERSPIRATION PH 8.0 ISO 105-E04			ACID PERSPIRATION PH 5.5 ISO 105-E04			CROCKING ISO 105-X12		WASHING 40°C ISO 105-C06 A25		
	C.C.	C.C.	C.C.	CO	PA	C.C.	CO	PA	C.C.	CO	PA	C.C.	CO	PA	S.CO DRY	S.CO WET	C.C.	CO	PA
	50 mg/l	C.C.	C.C.	CO	PA	C.C.	CO	PA	C.C.	CO	PA	C.C.	CO	PA	DRY	WET	C.C.	CO	PA
1410	2-3	3	4-5	5	5	4-5	5	5	4-5	5	5	4-5	5	5	5	5	4-5	5	5
1910	2-3	3	4-5	5	5	4-5	5	5	4-5	5	5	4-5	5	5	5	5	4-5	5	5
9917	3	4-5	4-5	4-5	4-5	4-5	4-5	4-5	4-5	4-5	4-5	4-5	4-5	4-5	4-5	3-4	4-5	4-5	4
2518	3-4	4-5	4-5	4-5	4-5	4-5	4-5	4-5	4-5	4-5	4-5	4-5	4-5	4-5	4-5	4-5	4-5	4-5	4-5
2319	4	4-5	4-5	4-5	4	4-5	4-5	4	4-5	4-5	4	4-5	4-5	4	4	3	4-5	4-5	4

Available colors: The 4 colors presented on this page are always available for sampling. If you would like to choose a color from the main Shiny Nylon color card, you can enjoy a MCQ of only 77yd for bulk orders. However, the resulting color shade and the color fastness performance may be slightly different. We will submit to your attention a lab dip swatch for approval before going to bulk production.

Special notes/warnings: It is advisable to test in lab color combinations, molding, bonding and applications on fabric in order to avoid problems during garment production. Please carefully check physical data and color fastness forecasts.

SHIRA MOTION

